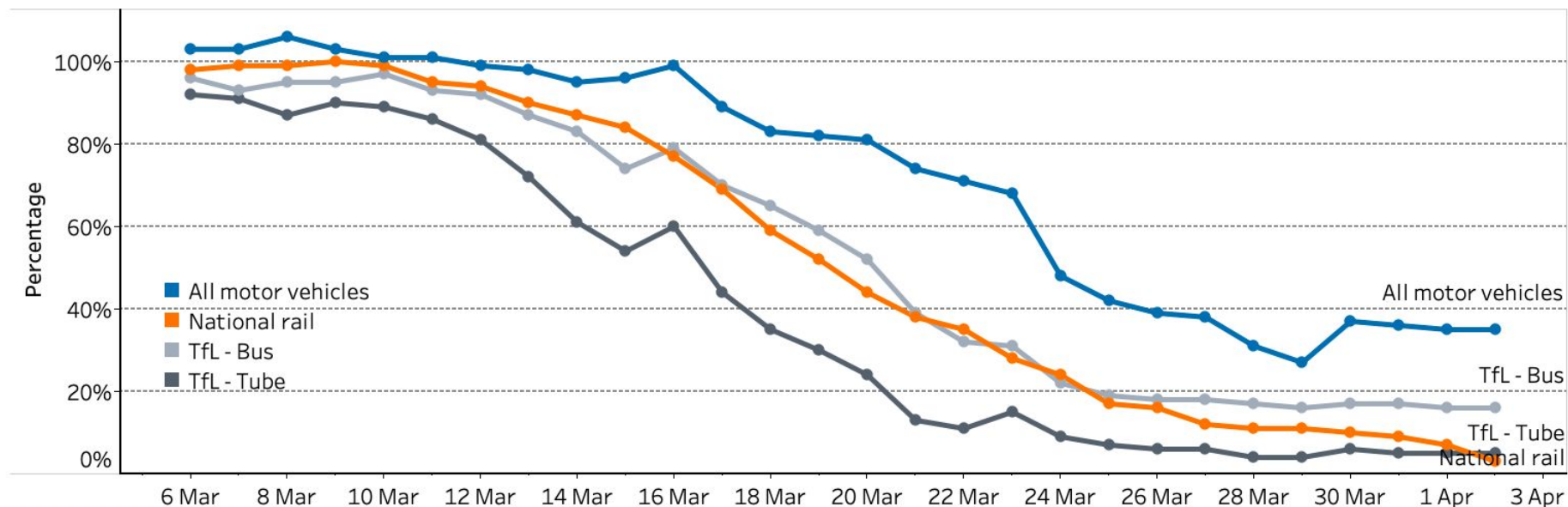


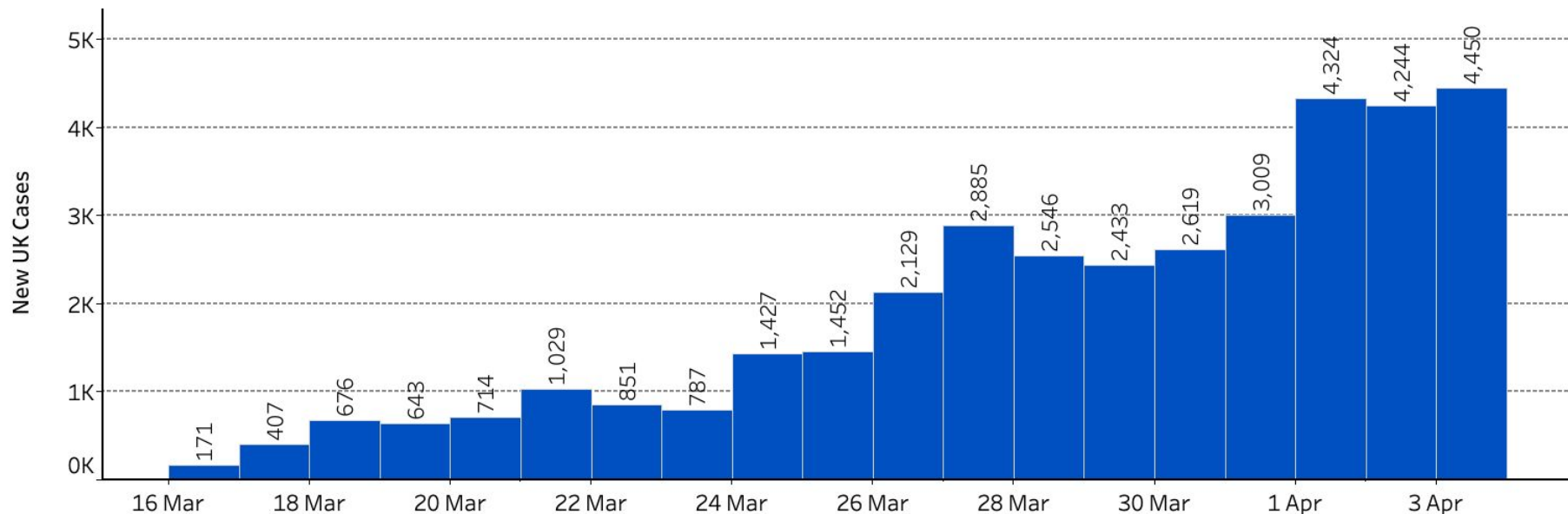
Transport use change

Transport use is down by more than 60% for all transport types compared to early February and has remained steady in the last week. The percentage change in the use of all motor vehicles, National Rail, the London Underground (TfL), and bus travel (TfL).



New UK cases

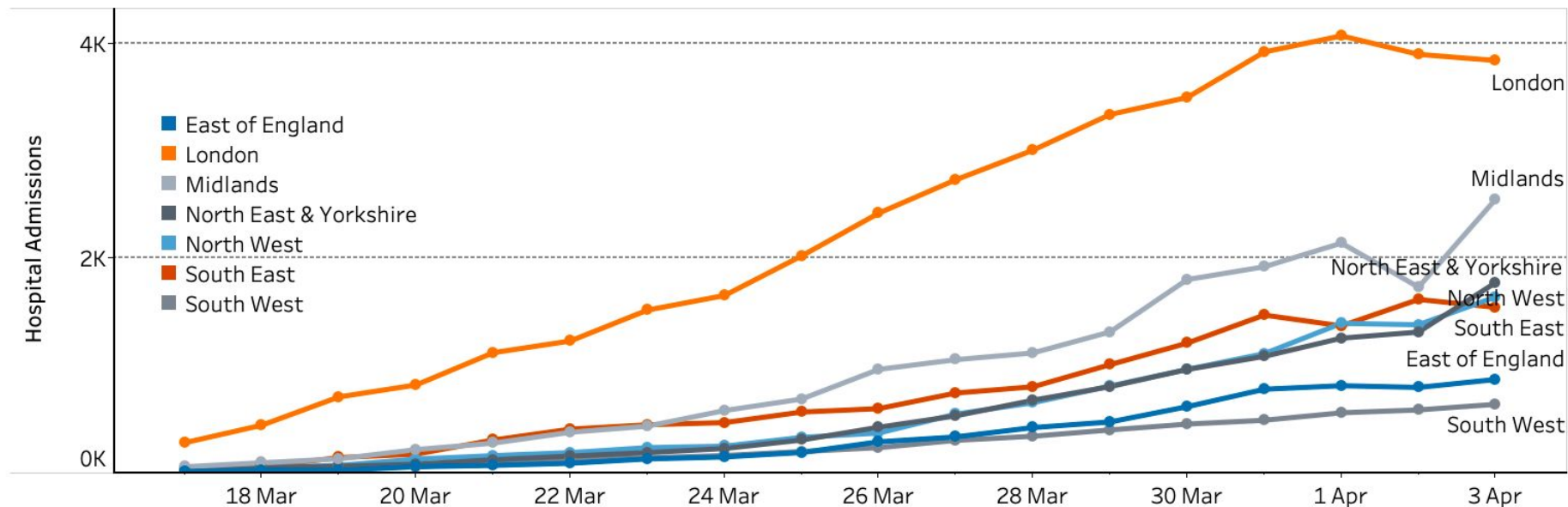
Cases are reported when lab tests are completed. This may be a few days after initial testing. Testing capacity is increasing, which is resulting in a greater number of observed cases. (Confidence: testing capacity constraints mean there are likely many more cases than currently recorded here).



STAY HOME > PROTECT THE NHS > SAVE LIVES

COVID-19 England Hospital Admissions

Over the last 24 hours, hospitalisations for COVID-19 rose by 47% in the Midlands and 35% in the North East & Yorkshire
(Confidence: a new categorisation has been added to an existing high quality administrative data set)

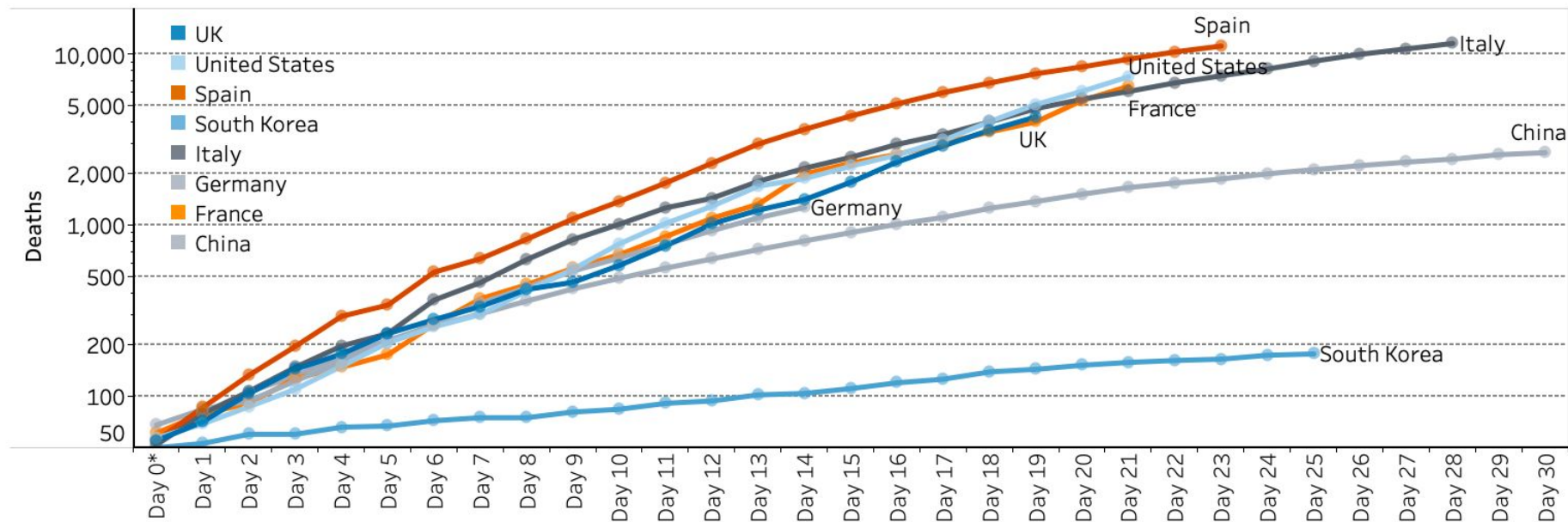


STAY HOME > PROTECT THE NHS > SAVE LIVES

Global Death Comparison

Countries are aligned by stage of the outbreak. Day 0 equals the first day 50 deaths were reported.

(Confidence: deaths are reasonably accurate, but international reporting lags are unclear, so may not be comparing exactly like for like).



Source: Public Health England, Worldometer. Reporting of UK deaths may lag by up to several days. Logarithmic scale.