

Manchester City Council Report for Resolution

Report to: Neighbourhoods Scrutiny Committee – 3 April 2013
Executive – 10 April 2013

Subject: Leisure Budget Proposals Consultation Response

Report of: Vicky Rosin, Deputy Chief Executive (Neighbourhoods)

Summary

This report summarises the responses to the consultation specifically on the leisure proposals that were communicated to residents as a part of the overall Neighbourhood Services budget proposals on the 23 January 2013. The budget proposals highlighted a plan to invest to replace Chorlton and Withington facilities with a new facility to be built at Hough End and to invest and provide a new Levenshulme Leisure Centre (which will include a library offer) to replace the existing buildings. These will be funded from the Council's Capital Programme and associated land receipts. The report highlights the findings from the consultation exercise and the implications for future service provision.

During the consultation process four community organisations have developed and submitted business plan proposals to maintain continuity of service for the pools and leisure facilities at Broadway, Levenshulme, Miles Platting and Withington. These plans have been evaluated and recommendations have been made with regards to the viability of delivering each of these options. In addition, detail is given on the provision of modern replacement facilities at Beswick, Hough End and Levenshulme. In addition, the report highlights the proposed changes for the Mersey Valley and makes a recommendation about the future management arrangement.

Recommendations

Members are recommended:

1. To consider and note the findings from the Consultation and the Equality Impact Assessments and note the significant investment into new leisure facilities.
2. To approve the proposed business plans for Levenshulme, Miles Platting and Withington pools to maintain service provision under the current operating arrangements until replacement facilities are built, subject to no significant capital investment being required into these buildings.
3. To approve the case for investment into a new leisure facility at Hough End to replace the current facilities in Chorlton and Withington and to authorise the Head of Community and Cultural Services and the City Treasurer to progress this proposal through the Council's Gateway Process. Note the programme and timescales below:

- a. Feasibility Work and Approvals – Spring 2013
 - b. Detailed Design – Summer 2013
 - c. Planning Approvals – Autumn 2013
 - d. Construction Start – Winter 2013
 - e. Practical Completion - Spring 2015
4. To approve the case for investment into a new leisure facility in Levenshulme to replace the existing facilities in Levenshulme, which it is proposed will include a library and to authorise the Head of Community and Cultural Services and the City Treasurer to progress this proposal through the Council's Gateway Process. Note the programme and timescales below:
 - a. Feasibility Work and Approvals – Spring 2013
 - b. Detailed Design – Summer 2013
 - c. Planning Approvals – Autumn 2013
 - d. Construction Start – Winter 2013
 - e. Practical Completion - Spring 2015
5. To approve the work with the developer (City branch) of the District Centre in Chorlton to bring forward proposals for a modern health and fitness facility.
6. To approve the closure of Broadway Leisure Centre from 26 May 2013 and to note the arrangements for supporting service users to access other sites.
7. To approve the closure of Chorlton Leisure Centre, Levenshulme Pools, Miles Platting Pools and Withington Leisure Centre, once the new replacement facilities have been built.
8. To approve the proposal to take a recommendation to a specially convened meeting of the Mersey Valley Joint Committee on 23rd May 2013 to seek approval for the Mersey Valley Warden team to be disbanded and the direct management of the valley be transferred to the South Area Community and Cultural Services team.

Wards Affected: All

Community Strategy Spine	Summary of the contribution to the strategy
Performance of the economy of the region and sub region	Implementation of the budget proposals will seek to protect economic, social and environmental development of the City.
Reaching full potential in education and employment	All services within the department aim to support individuals, families and communities.
Individual and collective self esteem – mutual respect	Individual respect and community resilience is a key theme within the Neighbourhood Focus Strategy.

Neighbourhoods of Choice	Creating sustainable neighbourhoods where people want to live, work and to stay as they become more economically independent is key to the budget strategy.
--------------------------	---

Full details are in the body of the report, along with any implications for:

- Equal Opportunities Policy – Where appropriate Equality Impact Assessments have been undertaken. These are summarised in Appendix 5.
- Risk Management – A risk management approach will be taken for all the proposals outlined in this report.
- Legal Considerations – These are reflected within the report.

Financial Consequences – Revenue

Following the implementation of the recommendations contained within the report the Council would achieve a saving of £824k in 2013/14, rising to £1.332m in 2014/15. This would reduce slightly to £1.029m in subsequent years to take account of the need to provide revenue funding for the costs associated with operating the new sites.

Transitional funding arrangements are set out for Levenshulme, Miles Platting and Withington until the replacement facilities are built and these will have the following annual revenue implications:

Funding Source	Levenshulme	Miles Platting	Withington
Community Fund Raising (under written by Cash Grants)	£60k	£70k	£57k
Operational Savings	£50k	£50k	-
Grant Funding	£20-30k	£20k	-
Active Lifestyle Programme Funding	£120k	£140k	-

In addition, the Council will still be required to pick up the costs of the utilities uplift until the end of the contract with Serco (April 2014), these costs are currently being met centrally (c£40-50k per annum for each building).

The investment approach outlined above will continue for the second year. After April 2014 new contractual arrangements will be established for the management of the three sites. Any savings achieved from issuing a new contract or any subsequent restructuring will be spread evenly across the whole contract and will help to mitigate any budget pressures.

Financial Consequences – Capital

The Capital consequences remain as proposed in the report to Executive Committee on 23 January 2013 (titled Neighbourhood Services Budget 2013-15). £10m of capital investment has been approved to deliver the Leisure Strategy from the Council's Capital Fund along with associated land receipts from Withington, Chorlton and Levenshulme. Subject to the approval of the recommendations in this report, further work will be undertaken to determine the detailed costs and this will be progressed for approval through the Council's Gateway Process.

Contact Officers:

Name Vicky Rosin
Position Deputy Chief Executive, Neighbourhoods
Telephone 0161 234 4051
Email v.rosin@manchester.gov.uk

Name Eamonn O'Rourke
Position Head of Community and Cultural Services
Telephone 0161 219 6946
Email e.o'rourke@manchester.gov.uk

Name: Neil Fairlamb
Position: Head of Sport
Telephone: 0161 223 1155 (Option 1, Ext 2130)
Email n.fairlamb@manchester.gov.uk

Background documents (available for public inspection):

The following documents disclose important facts on which the report is based and have been relied upon in preparing the report. If you would like a copy please contact one of the contact officers above.

- Executive Report, Indoor Leisure Review, 18 January 2012, Item 5.
- Neighbourhoods Scrutiny Committee Report – Outcomes of Indoor Leisure Consultation on the Indoor Review, 16 October 2012, Item 6.
- Executive Committee Report - Neighbourhood Services Budget 2013-15, 23 January 2013 - Item 6.

1.0 Introduction

- 1.1 On 16 January 2013, the Council published reports that set out a proposed budget for 2013-15. This was in response to the two year finance settlement from Government, which set out a level of reduced funding to the Council. The budget proposals presented to Executive on 23 January 2013 outlined savings totalling £80m across the Council.
- 1.2 To contribute to the overall savings target, Community and Cultural Services (CCS) proposed a number of closures to leisure facilities across the City and revised strategies for investment into new leisure provision. The new strategy looks to cease operating existing old and costly facilities and redirect provision to new or neighbouring facilities. In addition, to delivering the building related savings, CCS are required to reduce the budget by an additional £1.5m through a reduction in management and general staffing levels.
- 1.3 The consultation relating to the proposals for leisure facilities across the City ran from 24 January 2013 to 8 March 2013 with a wide range of methods used to communicate the proposals to residents and user groups. The details of the response to the budget consultation for the proposals for the leisure centres at Broadway, Chorlton, Levenshulme, Miles Platting, Withington and separately, the Mersey Valley are outlined in this report.

2.0 Consultations Methodology

- 2.1 Information relating to the consultations about the leisure proposals were made available at www.manchester.gov.uk/consultations. The Council's website presented information on the overarching budget consultation and specific information relating to the leisure proposals, with a summary of the proposals and links to supporting documents easily accessible. Specifically, residents were directed to a bespoke web page dealing with the leisure consultation. Residents also had the opportunity to complete a consultation questionnaire online about the proposed changes. Hard copies of the specific leisure consultation have also been made available in Council leisure facilities and libraries across the City, and specialist formats were available on request (including alternative languages, Braille and large print).
- 2.2 The consultation web pages were publicised through a variety of digital and community channels and were signposted from the Council's homepage to a bespoke web page for Leisure. All 218,000 Manchester households were sent a leaflet which invited residents to take part in the consultation exercise, signposted readers to the consultation web pages, and provided a telephone number to request a printed version if needed. A series of public meetings and drop-in sessions have taken place to enable residents to discuss the proposed changes.
- 2.3 Front-line staff were briefed and are aware of the channels available for collecting and recording budget responses from residents. Residents who contacted the Council were offered an assisted digital recording of comments on the budget consultation via the operators in the Customer Contact Centre.

All consultation related enquires, complaints and comments received by Executive Members and across Council departments have been logged and responded to centrally on a case by case basis.

3.0 Outcomes from the Indoor Leisure Consultation

- 3.1 There was a strong response to the consultation with 987 responses (482 of these were received after the amendment to the consultation on the 13 February) to the Indoor Leisure consultation questionnaire. Twelve consultation meetings were held in Chorlton, Levenshulme, Miles Platting, Moston and Withington and over a four week period. Over 600 residents and local ward councillors attended these meetings to comment on the proposals. In addition, 246 residents also expressed their views about the budget proposals through email, letter and telephone calls made to the Council. These individual pieces of correspondence have been logged and further information has been provided where relevant, including signposting to the online consultations. The detailed analysis of the consultation is provided in Appendix 1.
- 3.2 Following the initial announcement of the budget proposals there was a significant amount of public objection to each of the leisure proposals and this is reflected in the fact that 63% did not agree with the approach to close buildings. Just over a quarter of respondents (28%) agreed with the proposals and 10% stated that they didn't know.
- 3.3 There was a strong feeling that the existing facilities at Levenshulme, Miles Platting and Withington should stay open until new facilities are provided and that many residents would have transport challenges in travelling to alternative provision in the interim. In addition, similar concerns were raised at Broadway and indications were made by the community that there was interest in looking at proposals for self management of the business.
- 3.4 The Executive met on the 13 February 2013 and it was explained at the meeting that proposals had come forward from the community for Levenshulme, Miles Platting and Withington to keep the facilities open. Each proposal was different, but all were suggesting the means to keep the pools open until the proposed replacement facilities were in place. In addition to existing uses, these were in part to promote healthy lifestyles by introducing more targeted programmes for those in the community most in need. A decision was taken by the Executive on the 13 February 2013 to:
- (i) approve the budget recommended to the Council, subject to an amendment to the consultation proposals for Withington Baths to the effect that the pool remains open until the replacement facility is in place, based on funding being raised in the local community, failing which it will be underwritten by the use of Cash Grants.
- 3.5 The Levenshulme and Miles Platting proposals had identified targeted programmes to be supported by the possible use of Cash Grants, community and other fund-raising and the potential for some health monies from the

public health budget to support relevant active lifestyle programmes. It is understood that the Health and Wellbeing Board considered this matter generally rather than receiving specific recommendations. Therefore a decision was taken by the Executive on the 13 February 2013 to:

(ii) note that if the proposals outlined are agreed by Council further reports will be submitted in due course.

3.6 A total of 482 responses (incorporated within 987 responses outlined above) were received after the amendment to the proposals and overwhelmingly residents agreed that Levenshulme (91%), Miles Platting (84%) and Withington (84%) should stay open until they are replaced with a new facility.

3.7 During the consultation process the following general comments were raised, the key points are summarised below:

- Existing provision should remain in place whilst replacement facilities are being built.
- Money could be spent better in other parts of the Council i.e. particularly in relation to Manchester Airport, FC United and City Centre renovation works and funds should instead be prioritised for running of existing facilities.
- Travel links to new or alternate facilities are not sufficient and too costly for some residents to be considered an option.
- The proposals will have a detrimental effect on school swimming provision.
- There are safety concerns from residents around the elderly and young children having to travel outside of their locality.
- The gap in provision will impact on community participation in healthy activity.

3.8 General comments were also received in relation to the establishment of new service provision, the key points raised are summarised below:

- The lack of detailed proposals and plans for new facilities is a source of concern as it is difficult to engage in consultation without knowing if or what will replace the current offer.
- Request to refit the current buildings making them energy efficient.
- Concerns over the ability to deliver simultaneous programmes in the proposed new facilities.
- What will happen to the existing buildings, possible demolition and or land sale.
- Concerns that new facilities will not be designed for community use, particularly at Hough End.
- Doubts that a new facility will be ready in two years.
- Concerns over the Environmental Impact and that Hough End may lose green space.
- Accessibility – There is a dual carriageway between residents and Hough End.
- Concern that current provision won't be replicated in new facilities.
- Safety concerns about asking children to travel to facilities outside their

locality.

3.9 The following responses were made in respect of the above general comments

- ***Programming simultaneous activity***– The replacement facilities would be designed to accommodate the existing programmes and activity within the pools. The benefits of these facilities are fully understood and the design of the new facilities would be built upon the strengths of the existing approach.
- ***The proposals for existing buildings*** – If no Council need is identified for the buildings, and it is legally capable of being disposed of, the Council will seek to identify the best use of them, or the site, for the future. It should be noted however that funding of new facilities assumes some land receipts. Should interest be expressed by a community group, this will be assessed in the light of the Council's Asset Transfer Policies, and the Council will work with them to identify if the proposed use is sustainable and viable. If not, alternative uses will be sought for the building and/or site. This may include marketing the building for sale or to let on the open market, or, if it is deemed that the building itself is either a health and safety risk, or the cost of its retention whilst vacant is too high, demolition will be considered pending eventual disposal of the site. (This is a very general comment and proposals will vary from site to site dependant on the capital receipts position)
- ***Concerns over design of Hough End for non community use*** – Whilst the opportunity to encourage commuters to utilise the facilities at Hough End is acknowledged, any new facility would be designed for the local community rather than the needs of potential passing customers.
- ***Doubts that a new facility will be ready in two years*** – The programme for the build is set out in this report.
- ***Accessibility*** – The issues of crossing the dual carriageway for residents from Old Moat and Withington are acknowledged, however, it should be noted that there is an existing pedestrian crossing in place and any proposal for the site would have to establish a safe access for residents.
- ***Increase in traffic*** – The Council will be seeking to encourage residents to utilise public transport to access facilities, hence the proposals to locate the facilities next to major public transport links.

3.10 Following the series of public meetings four separate business plans emerged to make the case to maintain service provision at Broadway, Levenshulme, Miles Platting and Withington. These were submitted to Neighbourhood Services on the 11 March 2013 and an Officer led technical panel assessed the viability of each of the plans. The panel was chaired by Eamonn O'Rourke, Head of Community and Cultural Services, and the recommendations from the panel are set out in sections 4, 6, 7 and 8 of this report.

4.0 Outcomes from the consultation on Withington

- 4.1 Two consultation meetings were held in Withington and two further meetings were held with community representatives to help shape the business plan proposals for maintaining continuity of service provision over the next two years
- 4.2 A number of concerns were raised in relation to the proposed closure of Withington and these are summarised below. The full details are outlined in Appendix 1.

Withington- Consultation Responses	No.of responses
Lack of / problems with transport to alternate facilities	77
Keep current facility open until new one is built	63
Potential loss of health and community benefits	52
Disagree with the proposal	52
Invest money in updating rather than closing	22
Support the proposal	17
Not applicable / doesn't affect me directly	16
Don't destroy an historic/listed building	16
Need more information/info on neighbouring facilities	11
Make cuts in other areas / Don't waste money	11
Concern that alternate provisions may not cope with demand	11

- 4.3 In response to the comments received the following points should be noted:

- **Transport issues** – Whilst it is acknowledged that some residents may have to travel further to an alternative facility, the majority of residents in south Manchester would still be within 20 minutes public transport time of an alternative facility.
- **Demand issues** – Whilst there is spare capacity in some of the neighbouring facilities and work would be undertaken to prioritise community programmes, there would be some impact and modification's to existing programmes in order to accommodate the users from other sites.
- **Health and community** – Whilst it is acknowledged that some people may choose not to transfer to alternative sites, there would still be facilities available within a reasonable public transport time.
- **Make cuts elsewhere** – All area's of Council's expenditure has been reviewed and the cuts proposed for sport and leisure in Manchester is proportionate to the cuts been made in other departments. It should be noted that over 80% of all indoor sport and leisure spend is on swimming pools, therefore, it is inevitable that swimming pools will be affected by a reduction in funding.
- **Protect historic buildings** – The strategy has been developed on the basis of encouraging more people to participate in sport and active lifestyles and driving value for money. Whilst the leisure buildings are also valued by communities for historic or aesthetic reasons, the primary consideration has been the provision of the indoor leisure strategy.

- 4.4 **Withington Business Plan**– The business plan received for Withington sets out a proposal to keep the facility operational for the next two years under the current operational arrangements. The plan is viable and sustainable and is based upon the net savings targets being replaced by community fund raising underwritten by Cash Grants (£57k in year 1 and £127k in year 2). The remainder of the savings target attributed to this site will be achieved by a reduction in the service payment to the operator in year two as the payments for capital borrowing comes to an end. The community group established to develop the proposal understands that if there is any major asset maintenance spend required over the next two years then this could lead to the earlier closure of the facility. The group also have an ambition to look at operating the pool and building beyond the development of the new service provision however no plan from the community has been developed for this at the current time.
- 4.5 The panel have recommended that this proposal should be approved but noted that a number of risks exist, these are as follows:
- There are a number of maintenance issues with the existing building which if requiring significant expenditure will become a during the next two years. It is proposed that if there was any specific issue this would be raised with Executive Member for Culture & Leisure to enable a decision to be taken.
 - It should be noted that the building issues are not as apparent around the dry side activities.
 - Continuation of the arrangements with Serco will require the inflationary and utility uplift elements of the contract to continue to be met centrally.
 - Any contract re negotiations with the operators Serco will need to be viewed in the context of the whole contract for the delivery of leisure services across the City.
 - Underwriting fund-raising with Cash Grants will require the Cash Grants to remain uncommitted during the year until the outcome of community fund-raising is known.
 - It is not yet clear whether the site would be subject to an application to take over operation of the land and business in the future. This may impact on the Council's ability to generate sale proceeds from this site and could impact on the Council's ability to make the capital and revenue funding plan work.
- 4.6 It is recommended that service provision continues under the current management arrangements with Serco Leisure. Whilst there are a number of concerns which need to be mitigated through the design process, overall the proposal to keep Withington open until a new facility is provided at Hough End in spring of 2015 has been positively supported through the consultation process. The financial implications of this arrangement for the next 12 months are based on securing investment from:
- Community fund raising underwritten by Cash Grants (£57k).
 - In addition the Council will still be required to pick up the costs of the utilities uplift, which are currently met centrally (c£57k per annum).

- 4.7 The investment approach outlined above will continue for the second year. A substantial reduction in the running costs will be achieved in the second year as the cost of prudential borrowing (£184k) finishes in April 2014.
- 4.8 After April 2014 new contractual arrangements will be established for the management of the site. Any savings achieved from issuing a new contract or any subsequent restructuring will be spread evenly across the whole contract and will help to mitigate any budget pressures.

5.0 Outcomes from the consultation on Chorlton

- 5.1 Two consultation meetings were held in Chorlton and a number of concerns were raised in relation to the proposed move to Hough End and these are summarised below. The full details are outlined in Appendix 1.

Chorlton – Consultation Responses	No. of responses
Lack of /problems with transport to alternate facilities	59
Keep current facility open until new one is built	24
Support the proposal	24
Concern over the future of squash facilities	18
Concern that alternate provisions may not cope with demand	16
Invest money in updating rather than closing facilities	14
Unfair that Chorlton is remaining open	14
Disagree with the proposal	12
Potential loss of health and community benefits	10

- 5.2 At the public meetings there were a number of specific comments raised in relation to the facilities in Chorlton, these were as follows:

- Hough End is significantly further away for people from Trafford than Chorlton is.
- Concerns over whether the health & fitness offer in the Chorlton District Centre will be provided at the new centre.
- Concerns over squash provision in South Manchester.
- Local business will suffer as a knock on effect of closing the facility.
- Concerns over access to high schools for continued Sports hall use.
- Concerns over loss of Playing Fields at Hough End.

- 5.3 In response to the comments received the following points should be noted:

- **Transport issues** – Whilst it is acknowledged that some residents may have to travel further to an alternative facility, all residents in Chorlton would still be within 20 minutes public transport time of an alternative facility. Transport links are currently being improved in the area, residents will be able to use the Metrolink
- **Distance for Trafford residents** – It is acknowledged that Trafford

residents will have to travel further to Hough End then they do currently, however there is alternative provision for Trafford residents available at Stretford.

- **Squash provision** – The proposals for Hough End will incorporate Squash provision, subject to a funding contribution from external partners such as England Squash.
- **Sports Hall provision** – There is a range of alternative Sports Halls available for community use within a reasonable public transport time of Chorlton, particularly on School sites. The Council would work with Sport England, utilising funds from their Access to High Schools Fund to encourage greater use of these facilities.
- **District Centre trade** – A number of factors have been considered when determining future provision which includes: the budget available, public transport links, connections to the communities and neighbourhoods, sustainability and potential to contribute to regeneration objectives. Whilst there are some drawbacks of removing provision from district centres and locating facilities between communities, there are obvious benefits such as better access by a range of transport methods and additional financial efficiencies to be made linked to increased usage.
- **Loss of Playing Fields** – The proposals for Hough End will be based on the existing changing room block and therefore will have minimum impact on the existing playing fields. Any development of this site would also present an opportunity to leverage investment from external funding bodies to improve provision for outdoor sport.
- **Invest in existing facilities** – The Council could just invest in the existing facilities; however this is unlikely to have a significant impact on the overall running costs. The significant savings from creating new facilities versus operating the old pools is achieved by driving additional usage and associated income as a result of a better design of the pool hall, changing provision and health and fitness provision. The Chorlton facility is constrained and limits the Council's ability to drive additional usage. In addition, the funds to undertake repairs and maintenance on this building is considerable and the council would be required to undertake this work just to continue the current level of operation.

5.4 **Facility Development (Hough End)** – Given the need to minimise impact to the playing fields and to ensure easy access by public transport, by walking and by car, the preferred option is to locate a new facility on Hough End car park located to the west of Princess Road on the area of the site which currently accommodates the changing provision for the football pitches. This site has the following advantages:

- The site fronts directly onto Princess Road, with excellent visibility from a major city arterial route, the A5103.
- There is excellent accessibility to the site via public transport – the new Withington Metrolink Station is located 300m south of the site and there is a bus stop located immediately adjacent to the site.
- Cycle access is convenient, with an existing cycle path located at the back of the footpath to Princess Road, with the potential for up-grading this and connecting it to other cycling networks within the city.

- There is the potential for the leisure centre to act as a catalyst / hub for the potential up-grading of other recreational facilities on Hough End playing fields.

An indicative design plan is illustrated at Appendix 3

5.5 The land comprised in the Hough End playing fields was purchased freehold by the Council from Baron Egerton of Tatton. The Council is in discussions with the Trustees of the Tatton Estate to secure the necessary approvals to progress with the build of the Leisure Centre and associated infrastructure.

5.6 The outline programme for the development of the new facility is as follows:

- Feasibility Work and Approvals – Spring 2013
- Detailed Design – Summer 2013
- Planning Approvals – Autumn 2013
- Construction Start – Winter 2013
- Practical Completion - Spring 2015

5.7 It is recommended that service continues under the current management arrangements with Serco Leisure until the new facilities at Hough End have been developed. In addition, it is recommended that detailed discussions are progressed with the district centre developer (Citybranch) to progress with providing a health and fitness facility within the centre of Chorlton to be brought forward as part of the district centre redevelopment.

5.8 It is proposed that a design team is assembled with immediate effect to progress with generating a design and detailed cost plan for a new pool/s, health and fitness facility, squash courts and changing provision. This should involve engaging representatives from the community in helping to shape the proposed new facility. Detailed discussions should also be progressed with Sport England, the Football Foundation and the Rugby Football Union to assess if other funding sources can be secured to strengthen the overall leisure offer on this site.

6.0 Outcomes from the consultation on Levenshulme

6.1 Two consultation meetings were held in Levenshulme and three further meetings were held with community representatives to help shape the business plan proposals for maintaining continuity of service provision over the next two years

6.2 A number of concerns were raised in relation to the proposed closure of Levenshulme and these are summarised below. The full details are outlined in Appendix 1.

Levenshulme- Consultation Responses	No. of responses
Keep current facility open until new one is built	120
Potential loss of health and community benefits	36

Levenshulme- Consultation Responses	No. of responses
Lack of or problems with transport to alternate facilities	25
Don't trust that a replacement facility will be built	25
More information needed/Info on neighbouring facilities	20
Invest money in updating rather than closing facilities	17
Don't close Levenshulme facilities	17
Make cuts in other areas / don't waste money	16
Support / agree with the proposal	15
Concern over accommodating school swimming classes	13
Proposals go against original 2010/11 proposals/Olympic legacy	13
Concern that alternate provisions may not cope with demand	12

6.3 In response to the comments received the following points should be noted:

- **Transport issues** – Whilst it is acknowledged that some residents may have to travel further to an alternative facility, the majority of residents in south and east Manchester would still be within 20 minutes public transport time of an alternative facility.
- **School swimming** – Detailed work has been undertaken in accommodating the needs of the school swimming service at alternative sites, it has been established that the needs of all schools can be accommodated, although should be noted some school parties that currently walk would be required to utilise transport.
- **Demand issues** – Whilst there is spare capacity in some of the neighbouring facilities and work would be undertaken to prioritise community programmes, there would be some impact and modification's to existing programmes in order to accommodate the users from other sites.
- **Health and community** – Whilst it is acknowledged that some people may choose not to transfer to alternative sites, there would still be facilities available within a reasonable public transport time.
- **Make cuts elsewhere** – All area's of Council's expenditure has been reviewed and the cuts proposed for sport and leisure in Manchester is proportionate to the cuts been made in other departments. It should be noted that over 80% of all indoor sport and leisure spend is on swimming pools, therefore, it is inevitable that swimming pools will be affected by a reduction in funding.
- **Invest in existing facilities** – The Council could just invest in the existing facilities; however this is unlikely to have a significant impact on the overall running costs. The significant savings from creating new facilities versus operating the old pools is achieved by driving additional usage and associated income as a result of a better design of the pool hall, changing provision and health and fitness provision. The Levenshulme facility is constrained and limits the Council's ability to drive additional usage. In addition, the funds to undertake repairs and maintenance on this building is considerable and the council would be required to undertake this work just to continue the current level of operation.

- 6.4 There is an abundance of groups who utilise the Levenshulme facilities who have protected characteristics (e.g. transgender group, ladies only sessions target BME's etc), their needs have been assessed as part of the Equality Impact Assessment and this is set out in Appendix 5. The future needs of these groups will be a key consideration for any service provision or facility design going forward.
- 6.5 **Levenshulme Business Plan** - The business plan received for Levenshulme sets out a proposal to keep the facility operational for the next two years under the current operational arrangement. This plan is viable and sustainable and is based upon securing investment for programmes and activities from Public Health (£120k per annum), reducing operational costs (£50k per annum), grants (£20-30k per annum) and community fund raising underwritten by Cash Grants (£60k per annum). The community group established to develop the proposal understands that if there is any major asset maintenance spend required over the next two years then this will lead to the early closer of the facility. The group has not expressed any ambition to look at Community Asset Transfer of the facility but want to be involved in shaping the plans and programmes for any new facility.
- 6.6 The panel have recommended that this proposal should be approved but noted that a number of risks exist, these are as follows:
- There are a number of maintenance issues with the existing building which may require significant expenditure during the next two years. If there was any specific issue this would be raised at the appropriate time with Executive Member for Culture & Leisure and Finance & Human Resources to enable a decision to be taken.
 - Potential risk of further costs if new build is delayed, increasing the risk around buildings and potentially creating a further funding gap.
 - Underwriting fund-raising with Cash Grants will require the Cash Grants to remain uncommitted during the year until the outcome of community fund-raising is known.
 - Continuation of the arrangements with Serco will require the inflationary and utility uplift elements of the contract to continue to be met centrally.
- 6.7 **Facility Development (Levenshulme)** – A number of options to locate a new pool facility in Levenshulme have been considered, including those suggested following consultation with local residents, these are:
- Option 1 - To develop the current Arcadia Sports Hall site accessed from Yew Tree Lane.
 - Option 2 - To develop land at a site on the corner of the A6 (Stockport Road) and Elbow Street.
 - Option 3 - To refurbish the existing site on Barlow Road.
- 6.8 **Preferred Solution** - On the basis of the commentaries and assessments set out below the preferred solution is Option 1 – developing the existing Arcadia Sports Hall site. An indicative design solution is illustrated at Appendix 4.

6.9 Option 1 - Arcadia Sports Hall Site, Yew Tree Lane

- MCC owns all of the land.
- There is enough space on the site for all of the required facilities with space for car parking and servicing.
- The site has visibility from Stockport Road but is set back behind land which is owned privately.
- The design footprint is financially economic to deliver as a new-build.
- Existing uses for the Arcadia Sports hall would need to be re-located to an alternative site and this would need to be done in consultation with the existing users.
- There is also an option to acquire the privately owned land fronting the A6 (Stockport Road) which would give better visibility directly from Stockport Road, however, the Council to date has been unable to agree terms to acquire the land

6.10 Option 2 – Stockport Road / Elbow Street Site

- MCC owns the land.
- The site is too small to accommodate all of the required facilities resulting in an inadequate solution, with no space for car-parking / servicing.
- The building footprint is un-economic to develop.

6.11 Option 3 – Refurbish the existing site, Barlow Road

- MCC own the centre and the land.
- The costs of refurbishment within the existing building, to provide a fit-for purpose facility would not deliver value for money, with significant risk relating to working within an existing building.
- There is insufficient space for the proposed library, car parking or servicing.
- There are significant challenges relating to disability access which would be costly to overcome.
- The centre would be out of action for the refurbishment period of approximately 15 months.

6.12 The outline programme for the development of the new facility is as follows:

- Feasibility Work and Approvals – Spring 2013
- Detailed Design – Summer 2013
- Planning Approvals – Autumn 2013
- Construction Start – Winter 2013
- Practical Completion - Spring 2015

6.13 Given the above analysis it is recommended that service provision continues under the current management arrangements with Serco Leisure until a replacement facility has been developed, this should include some modifications to the existing programme to ensure that an extended programme of active lifestyle activities are provided to deliver health outcomes. The financial implications of this arrangement for the next 12 months are based on securing investment from:

- Public Health funding for programmes and activities (£120k per annum).
- Reducing operational costs (£50k per annum).
- External Grants (£20-30k per annum).
- Community fund raising underwritten by Cash Grants (£60k per annum).
- In addition the Council will still be required to pick up the costs of the utilities uplift, which are currently met centrally (c£40k per annum).

The investment approach outlined above will continue for the second year. After April 2014 new contractual arrangements will be established for the management of the site. Any savings achieved from issuing a new contract or any subsequent restructuring will be spread evenly across the whole contract and help to mitigate any budget pressures.

- 6.14 There are a number of concerns which need to be mitigated through the design process, however, overall the proposal to keep Levenshulme open until a new facility is provided in the District Centre, in spring of 2015, has been positively supported through the consultation process. Therefore, it is recommended that a design team is also assembled with immediate effect to progress with generating a design and detailed cost plan for a new pool/s, health and fitness facility, community meeting space, Library and changing provision. This should involve engaging representatives from the community in helping to shape the proposed new facility.
- 6.15 It is recommended that detailed planning work should now be undertaken to develop the new facility on the existing Arcadia site adjacent to the A6 (Stockport Road). This work should involve consulting with the service users such as the Roller Hockey Club at Arcadia to ensure that their future needs are assessed and that they have access to a suitable alternative facility in Manchester. This engagement will follow the same approach that the Council took when reviewing the Programme at Ten Acres Lane at Newton Heath. Detailed discussions should also be progressed with other external funding bodies to assess if other funding sources can be secured to strengthen the overall offer on this site.

7.0 Outcomes from the consultation on Miles Platting

- 7.1 Two consultation meetings were held in Miles Platting and two further meetings were held with community representatives to help shape the business plan proposals for maintaining continuity of service provision over the next eighteen months.
- 7.2 A number of concerns were raised in relation to the proposed closure of Miles Platting and these are summarised below. The full details are outlined in Appendix 1.

Miles Platting – Consultation Responses	No. of responses
Keep current facility open until new one is built	57
Lack of / problems with transport to alternate facilities	26
I support / agree with the proposal	21

Miles Platting – Consultation Responses	No. of responses
Not applicable / doesn't affect me directly	18
Concerns over the future of Sharks water polo club	18
Potential loss of health and community benefits	15
Don't close Miles platting facilities	13
Invest money in updating rather than closing facilities	12

7.3 In response to the comments received the following points should be noted:

- **Transport issues** – Whilst it is acknowledged that some residents may have to travel further to an alternative facility, the majority of residents in east Manchester would still be within 20 minutes public transport time of an alternative facility.
- **Demand issues** – Whilst there is spare capacity in some of the neighbouring facilities and work would be undertaken to prioritise community programmes, there would be some impact and modification's to existing programmes in order to accommodate the users from other sites.
- **Health and community** – Whilst it is acknowledged that some people may choose not to transfer to alternative sites, there would still be facilities available within a reasonable public transport time.
- **Shark Water Polo** – The needs of Sharks Water Polo are currently being designed into the new facility at Beswick.
- **Invest in existing facilities** – The Council could just invest in the existing facilities, however this is unlikely to have a significant impact on the overall running costs. The significant savings from creating new facilities versus operating the old pools is achieved by driving additional usage and associated income as a result of a better design of the pool hall, changing provision and health and fitness provision. The Miles Platting facility is constrained and limits the Council's ability to drive additional usage. In addition, the funds to undertake repairs and maintenance on this building is considerable and the council would be required to undertake this work just to continue the current level of operation.

7.4 **Miles Platting Business Plan** - The business plan received for Miles Platting sets out a proposal to keep the facility operational for the next eighteen months under the current operational arrangement. This plan is also viable and sustainable and is based upon securing investment for programmes and activities from Public Health (£140k per annum), reducing operational costs by condensing hours (£50k per annum), grants (£20k per annum) and community fund raising underwritten by Cash Grants (£70k per annum). The community group established to develop the proposal understands that if there is any major asset maintenance spend required over the next eighteen months then this could lead to the early closer of the facility. The group has no ambition to look at Community Asset Transfer of the facility but want to be involved in shaping the plans and programmes for Beswick.

7.5 The Panel have recommended that this proposal should be approved but noted that a number of risks exist, these are as follows:

- There are a number of maintenance issues with the existing building which may become a significant issue during the next eighteen months. If there was any specific issue this would be raised at the appropriate time with Executive Member for Culture & Leisure to enable a decision to be taken.
- Only 18 months of additional operation based on expected completion of Beswick facility reduces the risk of a significant failure within the building.
- Underwriting fund-raising with cash grants will require the cash grants to remain uncommitted during the year until the outcome of community fund-raising is known.
- Continuation of the arrangements with Serco will require the inflationary and utility uplift elements of the contract to continue to be met centrally.

7.6 **Facility Development (Beswick)** – All the capital funding for the development of the new leisure facility in Beswick has now been secured in principle following a recent successful application to Sport England. Detailed design work is currently underway and an application for planning permission will be presented to the Planning and Highways Committee in April 2013. Subject to planning approval the construction team will be mobilised in June to progress with the build programme.

7.7 The design of the facility will include pool space equivalent to that currently provided at Miles Platting which can be configured to provide two pool spaces or a single larger pool space suitable for full size Water Polo play. The pool will be fully accessible for people with disabilities, will have a moveable floor creating variable depth from 0.9m to 2m and seated spectator provision for over 100 people. The wet facilities will be complemented with a 70 station health and fitness facility, dance studio, vending area and changing provision. The indicative design for the facility is highlighted in Appendix 2.

7.8 Given the above analysis it is recommended that service provision continues under the current management arrangements with Serco Leisure until a replacement facility has been developed at Beswick, this should include some modifications to the existing programme to ensure that an extended programme of active lifestyle activities are provide to deliver health outcomes. In addition, it is recommended that underutilised 'off peak' activity in one of the pools is condensed to reduce operational costs during this period. Whilst there are a number of concerns which need to be mitigated through the design process, overall the proposal to keep Miles Platting open until a new facility is provided in Beswick, in the Autumn of 2014, has been positively supported. The financial implications of this arrangement for the next 12 months are based on securing investment from:

- Public Health funding for programmes and activities (£140k per annum).
- Reducing operational costs (£50k per annum).
- External Grants (£20k per annum).
- Community fund raising underwritten by Cash Grants (£70k per annum).
- In addition the Council will still be required to pick up the costs of the utilities uplift, which are currently met centrally (c£49k per annum).

7.9 The investment approach outlined above will continue for the second year

although the costs will be for a half year only as the new Beswick facility will open in the Autumn of 2014.

- 7.10 After April 2014 new contractual arrangements will be established for the management of the site. Any savings achieved from issuing a new contract or any subsequent restructuring will be spread evenly across the whole contract and help to mitigate any budget pressures.

8.0 Outcomes from the consultation on Broadway

- 8.1 Two consultation meetings were held in Broadway and two further meetings were held with community representatives to help shape the business plan proposals for maintaining continuity of service provision indefinitely.
- 8.2 A number of concerns were raised in relation to the proposed closure of Broadway and these are summarised below. The full details are outlined in Appendix 1

Broadway – Consultation responses	No. of responses
Lack of / problems with transport to alternate facilities	52
Health and community benefits to leisure facilities	32
Disagree with the proposal	25
Don't close Broadway facilities	21
Keep current facility open until new one is built	18
Not applicable / doesn't affect me directly	18
Can't comment without more information / Info on neighbouring facilities	17
Concern alternate provisions may not cope with demand	11

- 8.3 At the public and group meetings many points were also raised with regards to the proposals for Broadway, the key points are summarised below:

- Travel links to alternative facilities are insufficient and too expensive.
- Once the pool goes there will never be a chance of a facility in the area returning.
- Failsworth pool is at capacity whilst Chadderton is too expensive.
- Local business will suffer as a knock on effect of closing the facility.
- Investment into FC United Stadium, Alexandra Park & St. Peters Sq. should be instead used in New Moston facilities.
- Maintaining investment into health and fitness should be a higher priority when cutting budgets.
- Closing leisure facilities will increase pressure on the NHS.
- No capacity at alternative facilities to accommodate clubs and schools programme.
- Oldham MBC is politically less stable than that of Manchester City Council

and arrangements made by one regime may be overturned by another, leaving outside swimmers and gym users in “No Man’s land”.

8.4 The detailed outcomes from the consultation for Broadway are provided in Appendix 1.

8.5 In response to the comments received the following points should be noted:

- **Transport issues** – Whilst it is acknowledged that some residents may have to travel further to an alternative facility, the majority of residents in north Manchester would still be within 20 minutes public transport time of an alternative facility.
- **School swimming** – Detailed work has been undertaken in accommodating the needs of the school swimming service at North City and Abraham Moss, the needs of all schools can be accommodated, although two schools that currently walk to the pool would be required to utilise transport.
- **Demand issues** – There is spare capacity in some of the neighbouring facilities and work would be undertaken to prioritise community programmes, it was noted that there would be some impact and modifications needed to existing programmes in order to accommodate the users.
- **Accommodating clubs** – There is scope to accommodate club usage at North City, in addition Oldham Community Leisure Trust (OCL) have also stated that they would work with the Council to accommodate Broadway Swim Club in Oldham.
- **Health and community** – Whilst it is acknowledged that some people may choose not to transfer to alternative sites, there would still be facilities available within a reasonable public transport travel time.
- **Local business** – No businesses within the area have outlined to the Council that the proposals would have a business critical impact on their trading.
- **Too expensive elsewhere** – There are other facilities in North Manchester available with commensurate pricing policies. Whilst provision in Oldham is slightly more expensive, OCL have made a number of commitments to encourage Manchester residents to attend their facilities.
- **Cut other projects** – The projects suggested by the community are all funded from capital funding rather than ongoing revenue funds. These projects are in their advanced stages of implementation and are leveraging substantial external investment. In addition, the investment in FC United/ Ronald Johnson Playing Fields development demonstrates the Council’s commitment to community sports facilities within the area.

8.6 In addition to the above, as part of the initial data analysis in relation to the proposed closure of Broadway Leisure Centre it was communicated that a total of 125,618 visits were made in 2011/12. Through the consultation process Broadway Swimming Club who have historically utilised the pool raised concerns as to the validity of the data produced in relation to their usage. Although there has been no alternative data provided by Broadway Swim Club to substantiate the claim, a detailed review was undertaken by the

operator (Serco).

- 8.7 Following this review it is now understood that the original visitor data is not accurately represented for Broadway. Based on information provided by the Swim Club, up to an additional 12,000 visits may not be accounted for, for group users. Therefore, it is estimated that visitor numbers in 2011/12 were actually circa 137,000. It should be noted that these additional visits would not have added any additional income to the operational revenue budget.
- 8.8 Whilst the above comments should be noted, the uplift in visitor numbers still means that Broadway has below average visits when compared to other community facilities within the City, and that the site remains high cost, old and will require significant funding for repairs and maintenance over the next five years if the site is to continue to operate.
- 8.9 **Broadway Business Plan** – The business plan received for Broadway sets out a proposal to keep the facility operational for the next year under the current operational arrangement to allow Broadway Swim Club the time to develop a detailed proposal for Community Asset Transfer. The plan for the first year is reasonably strong as there is only a requirement to find £89k to replace the savings target to keep the site operational. The plan is based upon securing investment for activities and programmes from Public Health (£45k per annum) and community fund raising underwritten by cash grants (£45k per annum). However, the outline plan for Community Asset Transfer is much less secure and has a number of risks attached, principally, the Club has limited expertise in operating Swimming Pools. The club are proposing to develop a plan to operate the site in the second year with a running cost (deficit) of £100k and then moving to a break even business plan by the fifth year.
- 8.10 The panel have recommended that this proposal should be rejected as the business plan is not sustainable until year 5 (2017/18), there is insufficient funding available in years 3, 4, and 5 and there are a number of significant risks highlighted below:
- The proposal is reliant on a contribution from the Council of £75k, £50k and £25k in years 3, 4 and 5 (2015-2018) and there is insufficient uncommitted funding for this within the Neighbourhood Services budget.
 - On the date of transfer it is likely that the Club would require funding in advance to support cash flow.
 - The business plan assumes an increase, year on year, of 7%, over and above inflation, in revenues from wetside and dryside activities. This was considered by the panel to be ambitious and high risk, failure to deliver these targets would mean that there would be an increased gap in funding.
 - The business plan makes no allowance for inflation within the expenditure costs.
 - Whilst the plan generates a surplus of approx. £25k per annum, which is assumed to be available to cover any maintenance costs associated with the building, this is unlikely to be sufficient given the current condition of the building.

- No sensitivity analysis has been undertaken in respect of the income assumptions or details of how any losses would be managed.
 - Although the group have indicated some proposals around the reduction of staffing costs in the longer term through the use of volunteers, this isn't reflected in the submission.
 - Pure Gym has opened a health and fitness facility in the vicinity recently adding to the competition for dryside income.
- 8.11 In summary given that there is no investment case for a new pool to replace Broadway in the foreseeable future, the business plan needs to demonstrate a sustainable approach. Whilst the short term (2 year) funding plan is potentially viable, the business plan is not sustainable until year 5 and the long term outlook is uncertain, particularly in relation to the income assumptions.
- 8.12 Given the above analysis it is recommended that Broadway Leisure Centre is closed on the 26th May 2013 prior to the May half term following the completion of the last term of swimming lessons. This will enable the Council to make a saving of £89k in 2013/14 and £341k each year after April 2014. Whilst any proposal for Community Asset Transfer will still be considered, the Council would expect any organisation to make the case for this in the context of no ongoing revenue funding being made available from the Council. If the existing building can not be transferred or repurposed it is anticipated that it will be demolished at a cost of c£150k
- 8.13 To mitigate and manage the impact of the closure the Council will progress the following arrangements:
- Establish a local community task group to ensure that residents are assisted to transfer to alternative facilities. This will involve supporting them to gain access and breakdown any perceived barriers to their continued participation in sport and or healthy lifestyle activity.
 - Transfer the 11 schools that currently have their School Swimming Lessons (16 hours per week) at Broadway Pools to North City Family and Fitness Centre, Abraham Moss Leisure Centre or Miles Platting Pools. It is anticipated that to accommodate these sessions there will be a small amount of displacement of existing community provision in these three facilities, however this displacement would be targeted at the under utilised times. There are two schools that currently walk to Broadway Pools who would have to use transport. The cost of this transport will be absorbed within the current transport contract giving no impact on the Schools or Council's budget for the next academic year.
 - Transfer the current swim lessons from Broadway which operates on three evenings per week and at weekends to alternative sites. The last 10 week intake had 381 learners. There are approximately 298 places available for swimming lessons at Abraham Moss, North City and Miles Platting Pools but if there was further demand, these sites have the appropriate pool space to increase their swimming lesson offer to absorb this demand. This

may lead to some minor impact to the existing programme and available public swimming time, however this displacement would be targeted at under utilised times.

- Progress options to re-house Broadway Swimming Club and the Northfields activity at either Failsworth Pool or North City Family and Fitness Centre. There is currently some capacity at North City on a Friday evening and there are options to co-locate the Swim Club activity alongside the Harpurhey Swim Club activity on other evenings. Residents who are engaging in swimming lessons with Broadway Swim Club will be encouraged to integrate into alternative learn to swim programmes within the neighbouring facilities. This will ensure that Broadway Swim Club Lifesaving activity and competitive development activity is prioritised. This could have a positive impact on income generated at North City and Abraham Moss, however no assumptions have been made at this stage.
- Work with Oldham Community Leisure (OCL) to encourage Manchester residents (Broadway users) to access the facilities at Failsworth Sports Centre (2.2 miles from Broadway) and Chadderton Wellbeing Centre (2.3 miles from Broadway) and receive a comparative offer to that of existing users of Broadway Leisure centre. In many cases the offer from OCL would be a more substantial offer as the two OCL sites are of an enhanced specification to the existing Broadway facility.
- The Manchester Sport and Leisure Trust will work closely with Broadway's existing users to transfer them to North City and will ensure that they are not financially disadvantaged by the charging policies. Any pre paid gym members will be able to transfer their membership to North City or will be reimbursed. This could have a positive impact on income generated at North City, however no assumptions have been made at this stage.
- In addition, the following support arrangements have initially been approved by OCL:
 - OCL have recently launched an 'Oldham Active' card that offers all residents including Manchester residents a reduced access rate to OCL facilities. This card is not geographically constrained and for a subscription of £2 per annum could be offered to all Broadway users.
 - OCL would offer an exclusive "Come and Try" offer of 3 months membership for £50 to Broadway members at Failsworth. OCL would also be willing to provide Membership Services staff either on site at Broadway LC at certain peak-flow times, or at pre-arranged open evening presentations.
 - Broadway members who would prefer to use another OCL site would be offered a free 7-day pass to try Any of OCL's facilities, plus the waiver of joining fee should they wish to take up the membership after their trial.

- OCL would be willing to meet with representatives of the key Broadway groups and clubs to try and integrate them into the OCL pool programme if required. Normal OCL terms and conditions would apply to these groups so that existing OCL user groups, such as Swim Clubs, are treated consistently with Broadway groups.

9.0 Outcomes from the consultation on Mersey Valley

9.1 The Mersey Valley Joint Operating Committee has the primary responsibility for the maintenance and improvement of the environment of the Valley. The committee is made up of Members from Manchester City Council, Trafford MBC. Manchester City Council acts as the Managing District for the Committee and is responsible for the co ordination of the maintenance. As part of the public consultation for the Mersey Valley three public meetings were held. Initially there was an evident misunderstanding of the Council's proposals. There was a strongly held view that the withdrawal of the team of Mersey Valley Wardens would mean that no maintenance or protection of the Mersey Valley would take place in future. Through the consultation processes and communication channels it has been possible to outline an alternative operating and management model for the Mersey Valley, linking it to the current operation of other green spaces including the Irk and Medlock Valleys.

9.2 In addition to the open meetings, a number of stakeholders have been consulted on an individual basis with separate meetings being held for the following groups:

- The Friends of Chorlton Meadows.
- The Friends of Chorlton Water Park.
- The Water Adventure Centre.
- Local Anglers groups x 2.
- The Local Access Forum (local ramblers).
- We Are Adventurers (Forest School and outdoor activities).

9.3 There were 70 individual responses and there were a number of specific comments raised in relation to the provision in the Mersey Valley, these are highlighted in full in Appendix 1. The summary of the key issues are as follows:

- Neglect of the area including overflowing bins, fly tipping, dog fouling and out of control dogs.
- Increased anti-social behaviour and vandalism.
- Public safety issues including potential drowning.
- Reduced level of repairs and areas falling in to disrepair and neglect.
- Loss of experience and knowledge of the Mersey Valley.
- Loss of support to volunteer and user groups.
- Lack of access to the site facilities for meetings / storage etc.
- Negative impact on wildlife and conservation.

9.4 At the final public consultation meeting held on 12 March 2013 it was evident

that there was an acceptance that a change of operation from that directly delivered by the Mersey Valley Wardens could bring benefits and potentially open up new opportunities for local residents and key stakeholders (including Friends and school groups). There was a willingness to continue to meet and work together on future delivery models including possible self management of elements of operation such as the angling and volunteer co-ordination. Out of this consultation has come a number of offers for collaboration and leveraging in additional resources and assistance into the valley operation.

9.5 It is recommended that a report is taken to the Mersey Valley Joint Committee on 23rd May 2013 that recommends that:

- The Mersey Valley Warden team is disbanded and the direct management of the valley is transferred to the South Area CCS team. This would allow Manchester to discharge it's obligations to the Mersey Valley through an alternative management structure. Trafford MBC have advised the Mersey Valley Joint Committee that they intend to withdraw all funding from the partnership pending the outcome of their own public consultation.
- The current Grade 5 posts of Delivery Officer and Estate Supervisor (2 x posts) are matched to available Grade 5 posts in the Area Teams (potentially creating a consistent presence and level of experience at the Mersey Valley)
- The option for Glendales to deliver basic maintenance (grass cutting, refuse removal, basic pathway repairs, strimming, litter picking etc) is further investigated with colleagues from the South Area Neighbourhood Delivery Teams to deliver quality assurance against the Glendale contract
- The potential to mirror the operation at the Irk and Medlock Valleys and pool available budgets is further explored, potentially leading to a number of alternative contract arrangements for the maintenance of the wider Valleys and Country Parks (Mersey Valley, Irk and Medlock Valleys, Highfield Country Park, Stockport Branch Canal, Gorebrook Valley, and Knutsford Vale). This option to be examined in conjunction with colleagues in the South Area Neighbourhood Delivery Teams.
- Friends and other key stakeholders encouraged to form a Mersey Valley Forum to both support and challenge future operations and become an active sounding board. The management of this Forum to fall within the responsibility of the South Area CCS team

9.6 Work has been undertaken to produce a maintenance schedule for the 15 sites that make up the Mersey Valley and Officers have approached Glendales for a cost. The cost is in the region of £50K, making it deliverable within the available budget. This cost excludes the basic maintenance that currently takes place on the Irk and Medlock as delivered by the Mersey Valley Wardens.

10.0 Equality Impact Assessments

10.1 As a public body the Council has a number of statutory duties under equalities legislation. These are often referred to as the Public Sector Equality Duties

(PSED). The PSED require the Council, through its decision making process, to give due regard to the need:

- to eliminate unlawful discrimination, harassment and victimisation and other conduct prohibited by the Equality Act;
- to advance equality of opportunity between people who share a protected characteristic and those who do not;
- to foster good relations between people who share a protected characteristic and those who do not.

This involves in particular having due regard, to the need to (a) tackle prejudice; and (b) promote understanding

10.2 The protected characteristics are age, disability, gender re assignment, pregnancy, maternity, race, religion or belief, sex and sexual orientation. The Equality Act explains that having due regard for advancing equality involves:

- Removing or minimising disadvantages suffered by people due to their protected characteristics.
- Taking steps to meet the needs of people from protected groups where these are different from the needs of other people. Particular attention needs to be paid to the needs of disabled people in taking account of this requirement.
- Encouraging people from protected groups to participate in public life or in other activities where their participation is disproportionately low.

10.3 Compliance with the duties may involve treating some persons more favourably than others; but that is not to be taken as permitting conduct that would otherwise be prohibited by or under the Act.

10.4 An Equality Impact Assessment (EIA) has been completed to inform Members of the relevant more detailed issues in considering the recommendations in this report. The EIA is based upon analysis drawing on a number of sources of data. An action plan also accompanies the EIA.

10.5 The general response from the various equality groups indicated that there could be a gap in provision and the transfer of activities to alternative / neighbouring venues could have a negative impact upon users in the following ways:

- Possible decrease in users.
- Users will not travel to access what are currently local facilities and programmes.
- Users are familiar with existing environment with regard to pool temperature, private changing and exclusive use.
- Additional travel time and associated costs.

10.6 Council officers have identified where possible alternative provision in mitigating any transfer of users in accessing like-for-like activities. Maintaining the provision in Levenshulme, Miles Platting and Withington pools under the

current operating arrangements until replacement facilities are built would mitigate most identified negative impact. Where like-for-like provision is not possible, alternatives are being investigated.

- 10.7 However, it was also recognised that the provision of new facilities would deliver the possibility of growth for clubs, expansion of existing programmes and greater access once the new facilities are open. All groups expressed an interest in continued dialogue and input throughout the design process.

11.0 Savings Targets

- 11.1 The following revenue savings will be achieved per annum if the Recommendations outlined in the report are approved:

Savings Options	2013/14	2014/15	2015/16 & onwards	Comments
Accept Business Plan for Miles Platting	£280k	£170k	£111k	New pool opens in autumn 2014.
Accept Business Plan for Levenshulme	£248k	£302k	£52k	New pool opens in 2015.
Accept Business Plan for Withington	£57k	£375k	£375k	New pool opens in 2015.
Close Broadway	£89k	£341k	341k	Usage transferred to other sites.
Accept revised proposals for Mersey Valley	£150k	£150k	£150k	Full saving will be made in the first year.

- 11.2 If there are any major maintenance issues at either Levenshulme, Miles Platting and Withington causing the need for the Council to close mid way through the two year period, then the Council would effectively lose the opportunity to make some of the savings required as at least some of the costs of closure would still exist.
- 11.3 In addition, it should also be noted that if existing buildings can not be repurposed resulting in the Council needing to demolish the premises then the demolition costs would exist, these are projected to be in the region of c£150k per building and these costs would need to be met centrally.

Summary of Leisure Consultation Responses

1. Online and Paper Questionnaires

There were 987 responses to the Indoor Leisure consultation. Of these, 482 responses were received after the amendment to the Indoor Leisure proposals. This was broken down as follows:

- The largest proportion of respondents to the consultation were female (569 responses), 341 were male and the remainder did not respond.
- The majority of respondents (23%) were aged between 35 and 44 years. Respondents aged 24 and under responded the least compared to the resident population whilst respondents aged 35-64 were overrepresented compared to the resident population.
- Over two thirds of respondents (70%) stated their ethnicity as White British, a higher proportion than reflected in the resident population. 15% of respondents preferred not to say or did not respond to the question.
- The majority of respondents (37%) described their faith or religion as Christian. Just over a third of all respondents (34%) did not consider themselves to have a faith or religion. A large proportion (21%) did not want to state their religion or did not respond to the question.
- Over two thirds of respondents (77%) stated that they did not consider themselves disabled. 14% of respondents either preferred not to say or did not respond to the question.
- The majority of respondents (65%) described their sexuality as heterosexual. 26% of respondents either preferred not to say or did not respond to the question.
- The largest proportion of respondents (38%) lived in South Manchester. 12% lived in North Manchester, 7% lived in East Manchester, 5% lived in Central Manchester, 2% lived in Wythenshawe and 5% lived outside of Manchester. There was a high percentage of respondents (31%) whose postcode was only partially given or they did not state their postcode.

Respondents were asked if they agree with the proposed city-wide indoor leisure strategy to maintain a high-quality network of modern leisure and swimming facilities at North City Family and Fitness Centre, Abraham Moss Leisure Centre, Moss Side Leisure Centre, Manchester Aquatics Centre, Wythenshawe Forum and the introduction of new facilities in Beswick, Levenshulme and at Hough End. A total of 774 respondents answered the question, of which 63% (484) did not agree with the proposal. Just over a quarter of respondents (215, 28%) agreed with the proposal and 75 people (10%) stated that they didn't know.

Respondents were given the opportunity to comment on five proposals. Comments for each proposal have been coded by an external research company and have been grouped together into themed categories; please note that respondents may have commented on more than one category. The highest number of comments that have been received for each proposal are summarised below.

Proposal 1 - Temporarily transfer existing service users from Miles Platting to neighbouring facilities to enable Miles Platting to close early in 2013 and replace with

a new facility in Beswick by autumn 2014.

Proposal 1 – Themed Common Responses	No. of responses
Keep current facility open until new one is built	57
Lack of / problems with transport to alternate facilities	26
I support / agree with the proposal	21
Not applicable / doesn't affect me directly	18
Concerns over the future of Sharks water polo club	18
Potential loss of health and community benefits	15
Don't close Miles platting facilities	13
Invest money in updating rather than closing facilities	12
All facilities should remain open regardless	10

Proposal 2: Temporarily transfer existing service users from Levenshulme to neighbouring facilities to enable Levenshulme to close early in 2013, and replace with a new facility in Levenshulme District Centre by April 2015.

Proposal 2 - Themed Common Responses	No. of responses
Keep current facility open until new one is built	120
Potential loss of health and community benefits	36
Lack of or problems with transport to alternate facilities	25
Don't trust that a replacement facility will be built	25
More information needed/Info on neighbouring facilities	20
Invest money in updating rather than closing facilities	17
Don't close Levenshulme facilities	17
Make cuts in other areas / don't waste money	16
Support / agree with the proposal	15
Concern over accommodating school swimming classes	13
Proposals go against original 2010/11 proposals/Olympic legacy	13
Concern that alternate provisions may not cope with demand	12
Disagree with proposal	11
Not applicable / doesn't affect me directly	10

Proposal 3: Transfer existing service users from Withington to neighbouring facilities to enable Withington to close early in 2013, and replace with a new facility at Hough End by April 2015.

Proposal 3 - Themed Common Responses	No. of responses
Lack of / problems with transport to alternate facilities	77
Keep current facility open until new one is built	63
Potential loss of health and community benefits	52
Disagree with the proposal	52
Invest money in updating rather than closing	22
Support the proposal	17
Not applicable / doesn't affect me directly	16
Don't destroy an historic/listed building	16
Need more information/info on neighbouring facilities	11
Make cuts in other areas / Don't waste money	11
Concern that alternate provisions may not cope with demand	11

Proposal 4: Chorlton Leisure Centre will remain open until a replacement leisure centre at Hough End is provided in April 2015. As part of this proposal a health and fitness offer would remain in Chorlton to be brought forward as part of the district centre development.

Proposal 4 - Themed Common Responses	No. of responses
Lack of /problems with transport to alternate facilities	59
Keep current facility open until new one is built	24
Support the proposal	24
Concern over the future of squash facilities	18
Concern that alternate provisions may not cope with demand	16
Not applicable / doesn't affect me directly	14
Invest money in updating rather than closing facilities	14
Unfair that Chorlton is remaining open	14
No Comment / No / Don't Know	12
Disagree with the proposal	12
Potential loss of health and community benefits	10

Proposal 5: Transfer existing service users from Broadway to neighbouring facilities to enable Broadway to close in early 2013.

Proposal 5 - Themed Common Responses	No. of responses
Lack of / problems with transport to alternate facilities	52
Health and community benefits to leisure facilities	32

Proposal 5 - Themed Common Responses	No. of responses
Disagree with the proposal	25
Don't close Broadway facilities	21
Keep current facility open until new one is built	18
Not applicable / doesn't affect me directly	18
Can't comment without more information / Info on neighbouring facilities	17
Concern alternate provisions may not cope with demand	11

After February's Executive meeting, additional questions were included within the consultation following the Executive's decision (i) to amend the consultation proposals for Withington pool to the effect that it remains open until replacement facilities are in place at Hough End, based on funding being raised in the local community failing which it will be underwritten by the use of Cash grants and (ii) to continue to work with community groups to try to develop viable business plans to allow Levenshulme and Miles Platting pools to remain open until replacement facilities are available.

A total of 482 responses were received after the amendment to the proposals. Only valid responses to the additional questions have been analysed below. This is because there is a high number of 'no responses' to the additional questions; 'no responses' will include those who genuinely did not respond to the questions but the majority of 'no responses' is due to a large number of paper versions of the original consultation, which did not include the additional questions, being received after the amendment to the proposals. The responses to the additional questions were as follows:

- *Additional Question: Had you already completed this consultation before the proposals were amended on 13th February?*

There were a total of 257 valid responses to this question, of which 171 (67%) had not completed the consultation previously. A total of 72 (28%) had already completed the consultation before the proposals were amended and 14 (5%) couldn't remember if they had or hadn't responded previously.

- *Additional Question: Do you agree that Withington pool should remain open until it is replaced with a new facility at Hough End?*

There were 232 valid responses to this question, of which the majority (194, 84%) agreed with this proposal.

- *Additional Question: Should the Council continue to work with the community to develop a viable business plan to keep the Levenshulme pool open until the new facility is opened in the Levenshulme District Centre?*

There were 232 valid responses to this question, of which the majority (210, 91%) agreed with this proposal.

- *Additional Question: Should the Council continue to work with the community to develop a viable business plan to keep the Miles Platting pool open until the new facility is opened in Beswick?*

There were 231 valid responses to this question, of which the majority (193, 84%) agreed with this proposal.

Respondents were given the opportunity to give more information regarding the amendment to the proposals. In total 462 respondents have left additional comments. Comments have been coded and grouped together into themed categories; please note that respondents may have commented on more than one category. The Table below shows the type of comments that have been received.

Additional Comments - Themed Common Responses	No. of responses
Health and community benefits to leisure facilities	73
Lack of /problems with transport to alternate facilities	71
Keep current facility open until new one is built	30
Make cuts in other areas /Don't waste money	19
Other facilities do not meet my needs	19
Invest money in updating rather than closing facilities	18
Consultation time has not been long enough/not told about it/listen to the people	17
Don't close Broadway facilities	17
Concern over the future of squash/badminton facilities	12
Don't close Withington facilities	12
Concern over the future of Sharks water polo club	11
Don't close Levenshulme facility	10

The majority of respondents categorised themselves as Leisure customers (701) or as a Parent/guardian of younger customer (223).

Respondents were asked; of the ten leisure centres in Manchester how often they visited them. Of all the leisure centres that were visited, the majority of respondents 391 (12%) did so more than once a week. Withington Pool was the place that the majority of these respondents visited more than once a week, followed by Levenshulme (75) and then Broadway Pools (66).

The majority of respondents (942, 56%) swam in their local leisure centre, with the majority of these respondents swimming at Withington Pools (214) closely followed by Levenshulme Pools (213). 127 respondents swam at Broadway Pools followed by 118 at Manchester Aquatics Centre.

The second most popular activity that respondents participated in was attending the gym (310, 18%). Withington Pools had the majority of respondents attending the gym (106) with Broadway Pools having the second highest number of respondents

attending the gym (58). 245 (14%) respondents undertook another kind of sport within the ten leisure centres and 199 (12%) undertook a fitness class.

Respondents were asked that if they were affected by the proposals, how they and their families would participate in sport and healthy activity. Please note that respondents were encouraged to select more than one option. The responses are set out in the table below:

Themed Common Responses	No. of Responses
Use an alternative Manchester City Council leisure centre	500
Use an alternative Local Authority leisure centre, outside of Manchester	304
I would stop participating in sport and healthy activity	301
I would stop attending until new Leisure Centre opens	236
Join a private gym	202
I would take up a different sport or healthy activity	82

2. Public Meetings and 'Drop In' Session

Twelve public meetings and 'drop in' sessions were held in Levenshulme, Miles Platting, Moston, Withington and Chorlton over a four week period. Over 600 residents and local ward councillors attended the meetings. The meetings lasted two hours in duration and enabled residents to hear the detailed rationale behind the proposals, to ask questions about the impact and to assist in debating alternative options for delivering the savings targets. Cllr Jim Battle and Cllr Sue Murphy chaired the public meetings and Head's of Service presented the detailed proposals.

Many comments were raised at the meetings and the key points are summarised below:

- Existing provision should remain in place whilst replacement facilities are being built.
- Money could be spent better in other parts of the council i.e. particularly in relation to Manchester Airport, FC United and City Centre renovation works and funds should instead be prioritised for running of existing facilities.
- Travel links to new or alternate facilities are not sufficient and too costly for some residents to be considered an option.
- The proposals will have a detrimental effect on school swimming provision.
- There are safety concerns from residents around the elderly and young children having to travel outside of their locality.
- The lack of detailed proposals and plans for new facilities is a source of concern as it is difficult to engage in consultation without knowing if or what will replace the current offer.

- The gap in provision will impact on community participation in healthy activity.

Levenshulme - There were a number of specific comments raised in relation to Levenshulme, these are as follows:

- Request to refit the current building, making it a leading energy efficient facility.
- Concerns around effect on school swimming programme. Increased travel time will mean decreased pool time and increased cost for schools.
- The facility will close, central government will impose further budget cuts on Manchester City Council, who will then not be able to afford to build and run the new facility as proposed.
- The funding secured to a build new facility should instead be used to run and maintain current facility.
- Travel costs to alternative facilities are excessive and unsustainable.
- Investment into the city centre should be instead used to keep open the facility.
- Closure of the facilities will affect the most vulnerable, elderly and children
- Pool is under utilized.
- Challenge to transfer existing activities such as, Toddlers Fun Aquatics and other.
- A gap of 3 - 6 months between closure and a new facility open would be more acceptable.
- The ability to deliver simultaneous programmes in the proposed new facility.
- Concerns over the proposed location of the new facility, particularly if this results in other public services being removed. i.e. at Arcadia.
- What will happen to the building, possible loss of a well liked community building.

Moston (Broadway) - There were a number of specific comments raised in relation to Moston and the facilities at Broadway, these are as follows:

- Travel links to alternative facilities are insufficient and too expensive
- New Moston is quickly becoming a deprived community.
- Once the pool goes there will never be a chance of a facility in the area returning.
- Failsworth pool is at capacity whilst Chadderton is too expensive.
- Local business will suffer as a knock on effect of closing the facility.
- Certain parts of the city e.g. Chorlton get preferential treatment.
- Investment into FC United Stadium, Alexandra Park & St. Peters Sq. should be instead used in New Moston facilities.
- Maintaining investment in to health and fitness should be a higher priority when cutting budgets.
- It isn't feasible for school children to use Oldham pools as part of the school offer.
- Local business will suffer as a knock on effect of closing the facility.
- Closing leisure facilities will increase pressure on NHS

- £750,000 investment into FC United stadium would be better spent at Broadway.
- SERCO aren't most cost effective management solution for the facility.
- The Council should reduce Ward Members from 3 to 2 to save money.
- No capacity at alternative facilities to accommodate clubs and Schools Programme.
- The potential Chadderton proposition is rejected on the basis that Oldham MBC is politically less stable than that of Manchester City Council and arrangements made by one regime may be overturned by another, leaving outside swimmers and gym users in "No Man's land".

Chorlton - There were a number of specific comments raised in relation to the facilities in Chorlton, these are as follows:

- Hough End is significantly further for people from Trafford than Chorlton is.
- Concerns over the health & fitness offer in the Chorlton District Centre.
- Concerns over squash provision in South Manchester.
- Local business will suffer as a knock on effect of closing the facility.
- Concerns over access to high schools for continued Sportshall use.
- Concerns over loss of Playing Fields at Hough End.

Withington - There were a number of specific comments raised in relation to the facilities in Withington, these are as follows:

- Poorer children will miss out.
- Difficult passing judgement on the Hough End proposals without seeing the plans of the new facility.
- Use investment into airport on keeping this facility.
- Merge the existing centre with the adult education centre.
- Building was refurbished 10 years ago, and the fabric and the plant is not that old.
- Concern that new facility will not be designed for community use.
- Public travel connections to alternative facilities are considered poor.
- Doubts that a new facility will be ready in two years.
- Renovate the existing facility rather than build new.
- Concerns over the Environmental Impact and that Hough End may lose green space.
- Accessibility – There is a dual carriageway between residents & Hough End.
- Where is the £10m investment being spent? what is the split for each site.
- Increase in traffic on an already busy Princess Parkway

Miles Platting - There were a number of specific comments raised in relation to the facilities in Miles Platting, these are as follows:

- Concern that current provision won't be replicated in new facility.
- A new pool in Miles Platting has been previously promised and never delivered.
- Concerns over MCFC's involvement in the new facility at Beswick.

- Residents will not be able to afford the travel to the new facility. At the moment they are paying £9.99 a month for gym and pool usage.
- Safety concerns about asking children to travel to facilities outside their locality.
- School provision will be affected.
- Water Polo club may suffer if there is a gap in provision

Mersey Valley - As part of the public consultation for the Mersey Valley three public meetings were held. Initially there was an evident misunderstanding of the impact that a withdrawal of funding would entail. There was a strongly held view that the withdrawal of the team of MV Wardens would mean that no maintenance or protection of the MV would take place in future. Through the consultation processes and communication channels it has been possible to outline an alternative operating and management model for the MV, linking it to the current operation of other green spaces including the Irk and Medlock Valleys.

In addition to the open meetings a number of stakeholders have been consulted on an individual basis with separate meetings being held / scheduled for the following groups:

- The Friends of Chorlton Meadows
- The Friends of Chorlton Water Park
- The Water Adventure Centre
- Local Anglers groups x 2
- The Local Access Forum (local ramblers)
- We Are Adventurers (Forest School and outdoor activities)

There were a number of specific comments raised in relation to the provision at Mersey Valley, these are as follows:

- Neglect of the area including overflowing bins, fly tipping, dog fouling and out of control dogs
- Increased anti-social behaviour and vandalism
- Concern raised by local Councillor Sheila Newman that Glendales would not deliver an adequate service should they be contracted to take on the basic maintenance regimes
- Unregulated angling
- Closure of the public toilets
- Public safety issues including potential drowning
- Reduced level of repairs to paths and fencing
- Loss of experience and knowledge of the MV
- Loss of support to volunteer and user groups such as the Water Adventure Centre
- Playground falling into disrepair and neglect
- Lack of access to the site facilities for meetings / storage etc
- Negative impact on wildlife and conservation
- Undetected / untreated blue green toxic algae on Chorlton Water Park
- Lack of protection for wildfowl and wild birds

- Could there be a voluntary “tax” / voluntary contributions to keep the service running?
- Biodiversity in the Mersey Valley is in decline.
- Approach partners e.g. Manchester Airport, Metrolink to ask for funding.
- Educational potential – Develop an outdoor classroom for school use.
- Trafford Borough Council withdrawing funding has left Manchester City Council in the lurch.
- The businesses that benefit from the Mersey Valley e.g. golf course & hotels should be asked to contribute.
- Could another body such as the Wildlife Trust take over the running of the Mersey Valley.
- Charge for car parking this will generate some revenue.
- Can the RSPB work with Water Parks groups.

3. Other Correspondence Received

Residents have also expressed their views about the budget proposals through email, letter and telephone calls made to the Council. These individual pieces of correspondence have been logged and acknowledged and further information has been provided where relevant, including signposting to the online consultations.

The table below shows the 246 individual contacts which have been logged, as at 15 March, relating to Indoor Leisure proposals. These contacts have been grouped together into themed categories.

Correspondence Received - Themed Common Responses	No. of contacts
Opposition to proposed closure of Levenshulme Baths and Library	153
Opposition to proposed closure of Withington Baths and Leisure Centre	61
Opposition to proposed closure of Levenshulme Baths	23
Opposition to proposed closure of New Moston Library and Broadway Baths	4
General opposition to closure of swimming pools and libraries	4
Opposition to proposed closure of Miles Platting Pool	1

General Comments – The following comments emerged as key themes:

- Negative impact on the general health of residents. This was in the context that if a localised provision was removed then residents were less likely to travel to another facility outside of their locality.
- A general loss to the community – reducing public space of any kind within the community.
- The gap between the proposed closing date and the proposed opening of new facilities.
- Affordability of new facilities, will they be more costly to access?
- How will school swimming lessons and general swimming lessons be

affected?

- Importance of the existing buildings to the community and how they may be used in the future?
- The period of consultation was too short and had an insufficient breadth of questioning.
- Would the new facilities actually be built?
- Closures gave a negative impression on Manchester's Olympic Legacy.

4. Petitions

The Council has received a number of petitions in response to the original proposal to close Withington Baths. These petitions are summarised below:

- A paper petition from the Save Withington Baths Campaign. The petition states: "We the undersigned, petition Manchester City Council to save Withington Baths and Leisure Centre, to keep open this much used and loved community centre and not to close the facilities in March / April 2013. MCC is planning to close Withington, as well as other local leisure centres and libraries, and the consultation period ends on February 13, giving us just days to force a change in the proposal."
- An e-petition on the Council's website from a member of the public. The petition states: "We, the undersigned, petition the Council to Save Withington Leisure Centre".
- Two more petitions have been received that are invalid under the Council's petitions scheme. These have been submitted for consideration as part of the budget consultation process.

The main petition contact for the paper petition (which is the petition containing the most signatures) has been invited to the Council meeting (27th March 2013) to participate in the petition debate on Withington Baths.

5. Meetings with Various Groups

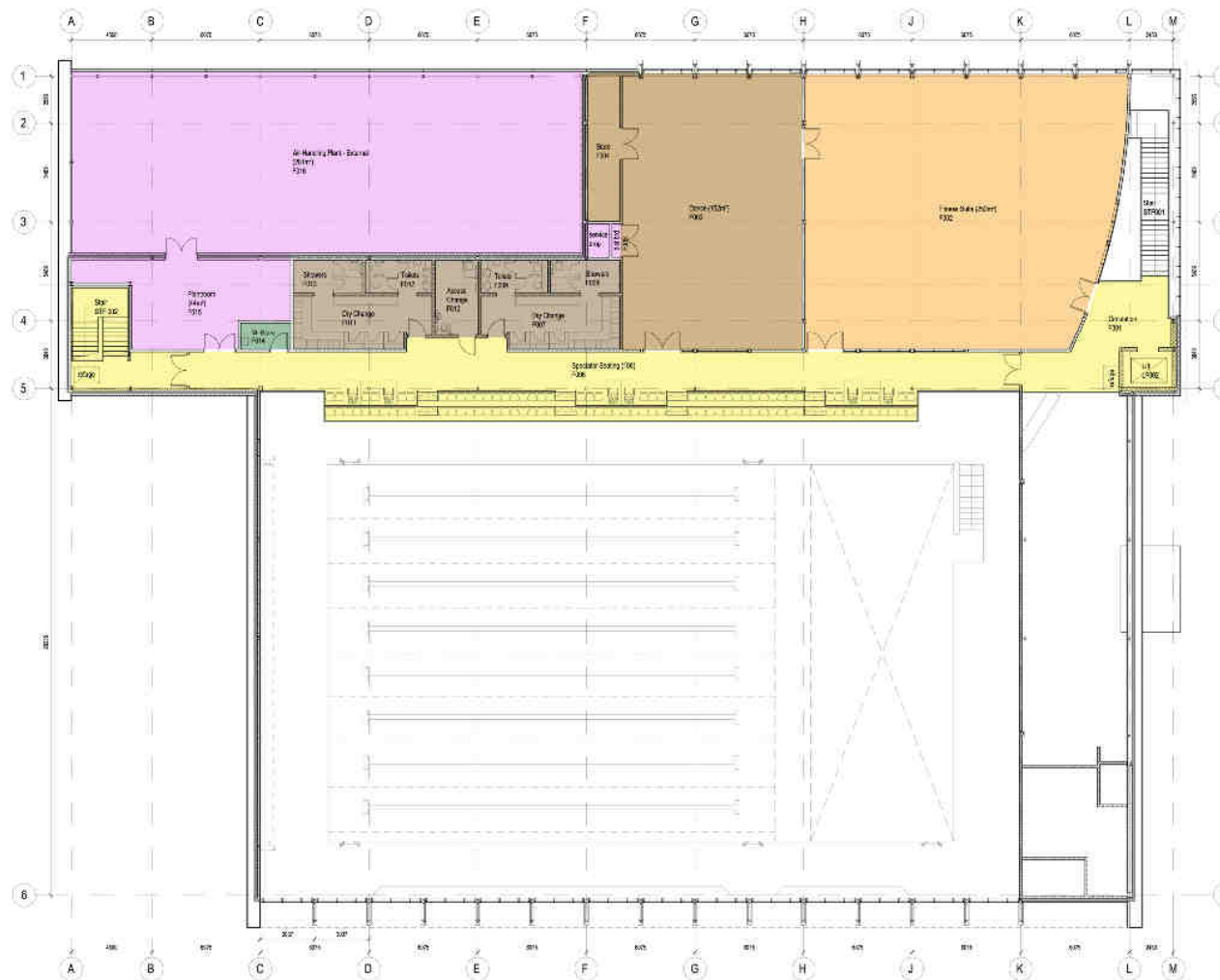
Throughout the six week indoor leisure consultation period, a number of meetings were held with a range of users including groups with protected characteristics. Following the proposals these groups, their needs, the impact to them and mitigation measures have been identified, the detail of which can be found in the Equality Impact Assessment attached in Appendix 5 of this report. In addition to these groups, a further meeting was held with Broadway Amateur Swimming Club and Broadway and Failsworth Lifesaving Club. The two clubs are operated by the same people and these officers met with officers of the Council and Serco Leisure on Tuesday 5th February 2012 at Broadway Pools at 7.45pm. The key points raised in the meeting were as follows:

- The club (s) questioned the accuracy of the data collection methods of the operator and informed officers this would be challenged on the grounds of inaccuracy.

- The club (s) informed officers that the proposals would be challenged and that the club had every intention of making the case to keep the pool open, they did not want it to close.
- If the decision was to close the club (s) informed officers that they would seek relocation support to alternative venues. It was confirmed by officers that support for transitional arrangements would be provided if required.
- The club (s) also confirmed if relocation was to occur, the clubs preference would be relocation to North City where existing activities were based. Relocation to Failsworth Sports Centre was not preferred, however the club would consider it, if it was required. The club believed if a part relocation of activities were to occur then they expected a reduction in membership from the clubs Manchester residents members.
- The club confirmed they have approximately 200 members, from across North Manchester, Oldham and further afield. 40 - 45 of which are members of the lifesaving club and 150 - 155 who are members of the swimming club. All swimming club members are affiliated to the Amateur Swimming Association (140 of which are regular attendees) and all lifesaving club members are affiliated to the Royal Life Saving Society.
- The club also confirmed that whilst it is not their preference at this stage, if required they would enter into discussions with Harpurhey Swim Club about the development of aquatics in North Manchester. Discussions would centre on how the two clubs could work together, especially form North City Family & Fitness Centre and how these discussions could support additional community swimming opportunities in North Manchester. Officers confirmed there is available capacity at North City and that partnership discussions with Harpurhey would be encouraged.

The floor plan is divided into several color-coded zones: pink for the Plant Room G037, blue for the Pool Hall G031, yellow for the Foyer G004, and green for the Changing Village G018. The central feature is the 35 x 21m Pool Tank G032, which includes a 21 x 8m moving floor and steps, and a 2m wide floating boom. To the left of the pool is the Plant Room G037, containing four filter units and a CO2 store. To the right is the Changing Village G018, which includes multiple group changing rooms (G024-G027), showers (G020-G023), and accessible facilities. The Foyer G004 on the right side of the plan contains a reception area, a lift, and a lobby. The bottom right corner features a pool store, first aid kit, and accessible WC. The plan also shows various stairs, lifts, and service areas like the cash office and staff rest.

Beswick First Floor Layout



Indicative Levenshulme Layout Plan



Levenshulme Location Plan






MANCHESTER CITY COUNCIL

City Centre City Centre City Centre City Centre
City Centre City Centre City Centre City Centre

Aedas 

Aedas is a leading international architecture and interior design firm, with offices in over 40 countries. Aedas is a member of the Aedas Group, which includes Aedas USA, Aedas Europe, Aedas Asia, and Aedas Africa.

Manchester City Council

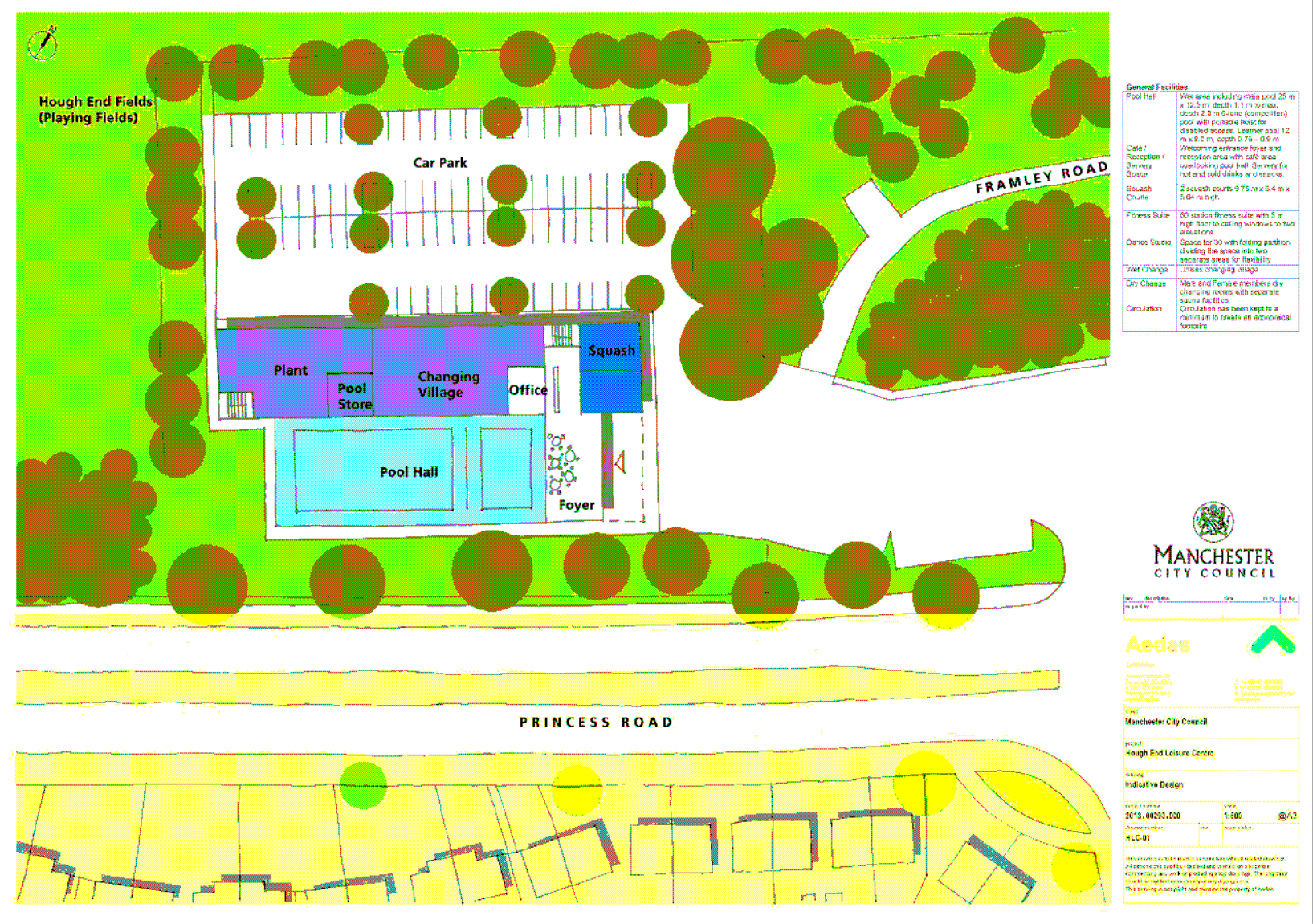
Project
Levenshulme Leisure Centre & Library

Drawing
Location Plan

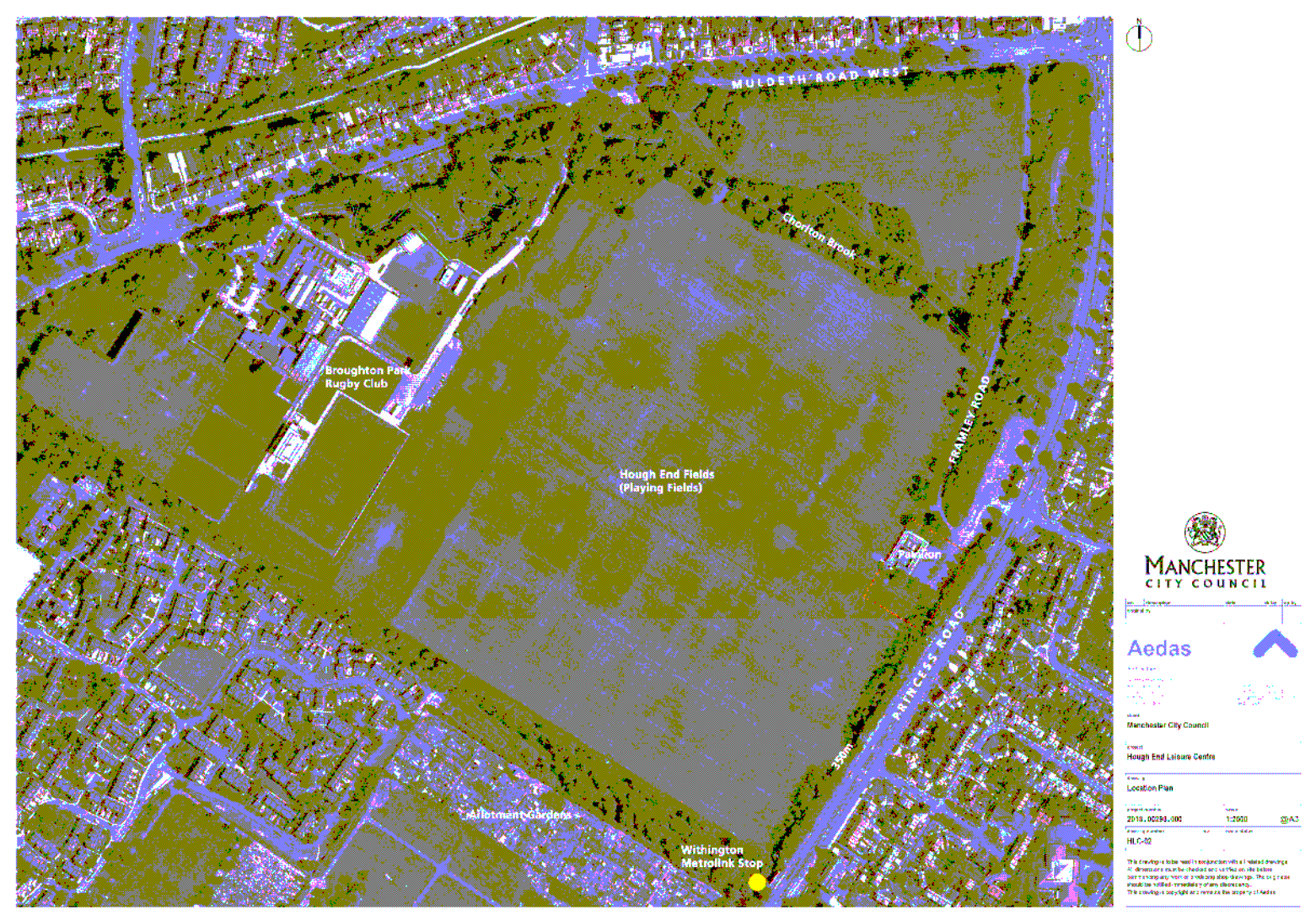
Project Number	2013-00284-000	Scale	1:1250	Sheet	A3
Drawn by	WJ	Check by	WJ	Scale	1:1250
LLC-02					

This drawing is to be used in conjunction with all other drawings. No responsibility is accepted for any errors or omissions. The accuracy of any information should be verified by the user. The drawing is copyright and remains the property of Aedas.

Indicative Hough End Layout Plan



Hough End Location Plan



Demonstrating Outcomes of Equality Analysis

EQUALITY IMPACT ASSESSMENT

1. Directorate	Neighbourhood Services	2. Section	Leisure (Indoor)	3. Name of the function being assessed	Changes to Indoor Leisure provision
4. Is this a new or existing function?	Existing	5. Officer responsible for the assessment	David Boothroyd/Jacqui Naraynsingh	6. Lead manager responsible for the assessment	Neil Fairlamb
7. Date assessment commenced	February 2013	8. Date of completion	20 th March 2013	9. Date passed to BIP Equality Team	20 March 2013

Summary of Relevance Assessment

1. Has a Stage 1 Equality Analysis: Relevance Assessment document been completed?

Yes ☒ Date of assessment: February 2013

No ☐ Please refer to 2.2 in the guidance above.

2. Please indicate which **protected characteristics** the relevance assessment identified as relevant to the function that is being assessed (tick below):

Age ☒ Disability ☒ Race ☒ Gender (inc. Gender Reassignment, Pregnancy and Maternity) ☒

Sexual Orientation ☒ Religion or Belief (or lack of religion or belief) ☒ Marriage or Civil Partnership ☐

3. Please indicate which **aims of the equality duty** the relevance assessment identified as relevant to the function being assessed (tick below):

☐ Eliminate unlawful discrimination, harassment and victimisation and other conduct prohibited by the Act

☒ Advance equality of opportunity between those who share a protected characteristic and those who do not



Foster good relations between people who share a protected characteristic and those who do not

Equality Impact Assessment Template

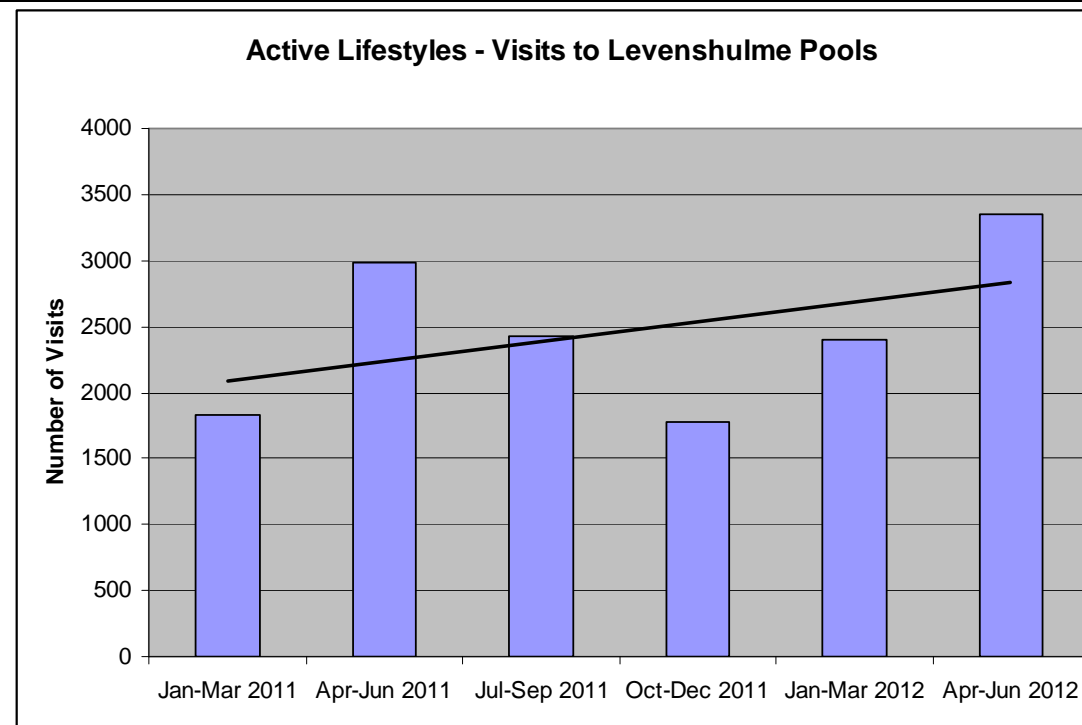
1. About your function

<p>Briefly describe the key delivery objectives of the function being assessed</p>	<p>Community and Cultural Service is part of Manchester City Council's Neighbourhood Services directorate. It delivers leisure services through a range of leisure trusts, including the Manchester Sport and Leisure Trust (MSLT) with a network of 11 indoor swimming pools across the city from the world class Manchester Aquatics Centre (MAC) to local swimming pools located in local communities in Chorlton, Withington, Miles Platting, Abraham Moss, Broadway, North City, Levenshulme and Moss Side.</p> <p>It also provides 11 health and fitness suites, activities and classes, 9 health and wellbeing suites, facilities for team sports, racket sports, martial arts and also bookable facilities for private classes and activities.</p> <p>MSLT also accommodates the Community and Cultural Service Active Lifestyles programme which aims to enable all Manchester communities to access and participate in an active lifestyle, irrespective of age, gender, ethnicity or culture by creating and implementing a physical activity offer for Manchester people.</p> <p>Community and Cultural Services has a dedicated Disability Sports Manager in post who co-ordinates the Disability Sports Programme (CADS). CADS camps are fully inclusive sporting events where young people regardless of ability, can take part in many different sport, health and leisure activities. The ethos is that sport can be played by anyone and should be enjoyed by all. CADS aim to help young people realise their full sporting potential. All camps are fully integrated where disabled and non-disabled children participate side by side regardless of ability.</p> <p>Community and Cultural Services provide a universal service, open to the entire community. They play host to a wide range of different events, activities and groups. The MSLT actively promotes equal access and equal opportunities and undertakes specific activity so that some of our most vulnerable residents are able to benefit from leisure services.</p> <p>Neighbourhood Services have already delivered significant savings between 2011 and 2013 with the achievement of approximately £30m of savings through transforming services and organisational arrangements which saw 19 service areas in the Neighbourhood Services directorate reduced to 3 key service blocks and a reduction of management costs by 42%.</p> <p>The Council now has to address a further funding shortfall of £80m over the next two financial years</p>
--	--

	<p>following the government's financial settlement. The current level of savings proposed within Neighbourhood Services for 2013/15 is £12m.</p> <p>A strategic indoor leisure review has identified a number of community facilities which are failing to meet quality standards because of their age and poor condition and which have considerable investment needs as well as high maintenance costs.</p> <p>Research and benchmarking undertaken by Sport England through the Active Places database has highlighted that Manchester's indoor sport and leisure provision is currently well provided for in numerical terms. Across a range of facility types including sports halls, health and fitness facilities and swimming pools Manchester has a higher number of venues than both the England and the North West average when facilities are calculated on a per head of population basis. However, due to the age of a large part of our stock we score low for the quality of service in comparison to other cities.</p> <p>Currently Manchester City Council spends £5.4m per annum on Indoor Leisure provision in Manchester. Spend per head of population for Manchester currently stands at £10.89, this is higher than the England average, which is £8.67, and higher than the majority of the Core Cities. In particular Birmingham and Bristol are very low at £7.02 and £5.67 respectively. The major contributing factor to the cost of the existing service is the relatively high cost in providing some of the older leisure facilities in Manchester which are currently performing below average.</p> <p>Under the proposals around leisure service provision, the Council will make a one-off capital investment of £10 million in modern replacement facilities for Chorlton/Withington pools (to open at Hough End in spring 2015) and Levenshulme pool (to open spring 2015) alongside an already-funded new pool in Beswick (to open autumn 2014.)</p> <p>These proposals also involved the early closure of four current Manchester pools – Broadway, Levenshulme, Miles Platting and Withington on May 26th 2013. All are old and in poor condition and the move would avoid high ongoing maintenance and running costs.</p> <p>During the public consultation period around these changes, the Council received alternative community business plan proposals for all of the pools - Withington, Levenshulme, Miles Platting and Broadway. The proposals are slightly different and three proposals Withington, Levenshulme and Miles Platting involve keeping the pools open with the current operator until replacement facilities are in place to continue to promote healthy lifestyles by expanding programmes aimed at the most in-need community members to run</p>
--	--

	<p>alongside existing programmes. The final proposal for Broadway was for continued operation but that the community would take over the operation of the site as part of a possible community asset transfer.</p> <p>The Withington community business plan proposals were the first to be developed and under the revised proposals, Withington Baths would now remain open until the new pool opens in Hough End in 2015. Funding would cover running costs but not the significant capital works required to the building. Under this proposal it is not expected that there would be any detrimental impact to equality groups.</p> <p>Officers have been working with community groups to further develop community business plans for Levenshulme and Miles Platting to see if they can also be kept open until replacement facilities are opened in 2015 (Levenshulme) and 2014 (Beswick) respectively. This EIA will look at whether any aspect of closure prior to new facilities being available would have a disproportionate impact on any of the protected characteristics as detailed in the Equality Act 2010. Where negative impact is identified, proposals are made in the action plan to mitigate that impact wherever possible.</p> <p>Broadway Leisure Centre is situated on the boundary of Oldham MBC and as such 33% of existing users are non Manchester residents. It is proposed that Broadway Leisure Centre is closed on 26th May 2013. The council will continue to consult and explore options to relocate swimming and other activities to neighbouring sports and leisure provision in North Manchester and Chadderton Leisure Centre to mitigate any disproportionate impact on any of the protected characteristics as a result of this transfer. Broadway users already have access to modern, accessible, replacement provision in their local area as North City Family Fitness Centre was opened in 2005 and meets the council objectives for leisure facilities and currently existing user groups such as Northfields access this offer weekly.</p> <p>All the proposed new buildings will provide a modern quality offer including moving pool floors and recessed booms delivering the flexibility for diverse programmes, thus encouraging more people to become more active, while at the same time reducing running costs and saving money. When considering the replacement of existing facilities the council has identified key strategies that will benefit Manchester residents. The council believe these will improve the service offer for more customers, respond to economic and social change, support economic growth and help regenerate district centres and local communities.</p> <p>There are three overall objectives for the changes to indoor leisure facilities.</p> <ul style="list-style-type: none">• Whenever possible, facilities should be sited in community hubs tailored to the specific needs and requirements of the surrounding neighbourhoods, where residents can access activities, information
--	---

	<p>and advice and use self-service in one place.</p> <ul style="list-style-type: none"> • The Council should continue to work with commercial partners and external funding bodies to provide new facilities with the aim of improving customer satisfaction levels and reducing running costs. • All Manchester City Council residents should live within a 20-minute walk, or public transport journey of a high-quality swimming pool.
What are the desired outcomes from this function?	<p>The main driver for the latest proposed change is financial and service improvement: The council needs to make £80 million savings over the next two years. Neighbourhood Services need to contribute £12 million to reaching this target. By closing some pools prior to new facilities being completed, it is anticipated that there will be a reduction in the impact of savings the council need to make across the leisure service on the city as a whole. Additionally, it means that resources – particularly staff – can be used more effectively.</p> <p>Due to the capital investment that the council has committed to, in the programme for leisure facility development, proposals will ultimately lead to a much improved leisure offer for all Manchester residents and an ability to sustain provision due to additional usage and capacity for additional programme development. These programmes will reduce dependency and increase opportunities for residents to play a fuller part in community life; increasing the overall health, life expectancy and quality of life for Manchester residents.</p> <p>Investment aims:</p> <ul style="list-style-type: none"> • To ensure that all customers and staff are able to access services and facilities available at the new pool and leisure facilities and that no equality group is discriminated against or disadvantaged • As a minimum, building closures will be minimised to ensure that the needs of equality groups are protected. Wherever possible, a more accessible infrastructure will be developed to encourage an even wider customer base and scope for improvement. <p>During the consultation period a number of equality groups including Active Lifestyles groups, and City Care reported that they would deliver additional sessions and activities if capacity was available and suitable.</p> <p>The graph below shows the number of visits over time (by quarter) at Levenshulme and depicts an upward trend indicating that there is scope for increasing usage.</p>



The trend toward increased usage of modern facilities was clearly demonstrated when Rotherham City Council replaced 12 old facilities for 4 new ones as usage of the new centre's was significantly higher than the former network, even though there were previously more sites. In the last full year of operation there were 848,000 visits to the 12 facilities. In 2009/10 with only three of the four new sites fully operational visits had risen to 957,000.

Under the initial proposals it was proposed that, temporarily, service users from Miles Platting will be facilitated to use North City Family and Fitness Centre, Wright Robinson Sports College, and the Manchester Aquatic Centre until the new Beswick facility is open. Service users from Levenshulme will temporarily be facilitated to utilise the Manchester Aquatics Centre and Wright Robinson until the new centre is developed. Furthermore, Broadway users will be facilitated to utilise North City Family and Fitness Centre and the new state of the art facilities at Chadderton Wellbeing Centre.

2. About your customer

Do you currently monitor the function by the following protected characteristics?	Protected Characteristics	Y/N	If no, please explain why this is the case and / or note how you will prioritise gathering this equality data
	Race	Y	Data is captured where there is either a membership requirement or where a targeted programme of activity is in place which requires the need for monitoring. No detailed personalised data is currently captured for casual pay and play activities. For example, Active Lifestyle and Children's Able and Disabled Sport (CADS) groups monitor equality groups except sexuality, marriage and civil partnership and religion and belief. Gender monitoring does not extend to gender reassignment, pregnancy and maternity. In order to mitigate against negative impact of the new facilities upon any individual group, more robust monitoring arrangements are being developed in relation to delivery of new contracts post April 2014 to ensure greater transparency and improved evaluation.
	Gender (inc. gender reassignment, pregnancy and maternity)	Y	
	Disability	Y	
	Sexuality	N	
	Age	Y	
	Religion or belief (or lack of religion or belief)	N	
	Marriage or civil partnership	N	
4. What information has been analysed to inform the content of this EIA? Please include details of any data compiled by the service, any research that has been undertaken, any engagement	Leisure data from Active Lifestyles, Manchester Sport and Leisure Trust and SERCO was analysed to inform the content of this EIA alongside CENSUS data and information from GMPTE. A public consultation exercise was carried out from 23 rd January 2012 until 8 th March 2013. The consultation asked for views on the proposed closure of four sites 26 th May 2013 ahead of future service re-provision: Miles Platting, Levenshulme, Broadway and Withington. After February's Executive meeting, additional questions were included within the consultation following the Executive's decision (i) to amend the consultation proposals for Withington Pool to the effect that it remains open until replacement facilities are in place at Hough End, based on funding being raised in the local community, failing which, it will be underwritten by the use of Cash Grants and (ii) to		

<p>that was carried out etc.</p>	<p>continue to work with community groups to try to develop viable business plans to allow Levenshulme and Miles Platting pools to remain open until replacement facilities are available. The consultation was undertaken through a variety of different channels.</p> <p>The Council's website hosted information on the indoor leisure consultation with a summary of the proposals, and links to supporting documents including the full committee reports, leading into a series of questions for residents to complete about the proposed changes. Hard copies of each consultation were also made available at leisure facilities and libraries, and specialist formats were available on request (alternative languages, Braille and large print).</p> <p>The consultations web pages were publicised through a variety of digital and community channels, and signposted from the Council's homepage. All 218,000 Manchester households were sent a leaflet inviting them to take part in the consultation exercise, signposting readers to the consultations webpage, and providing a telephone number to request a printed version if needed. Assisted digital recording of comments via the operators in the Customer Contact Centre was also offered to residents telephoning the Council who found other methods of completing the consultation unsuitable.</p> <p>20 Specific equality groups were contacted by email, signposted and asked to contribute to the consultation either by asking their members to fill out forms, attending a meeting / drop in session or by requesting a 1-1 discussion. 74 members of the public who were non leisure users subsequently responded to the consultation.</p> <p>Consultation meetings and drop-in sessions to enable the public to share their views on the leisure proposals with senior council officers were held on: -</p> <p>Tuesday 12 February (5 – 7pm) Crowcroft Park Primary School, Main Hall, Northmoor Road Longsight M12 5SY</p> <p>Saturday 16 February (10am – 12noon) – Levenshulme Library, Cromwell Grove, Levenshulme M19 3QE (Meeting Room)</p> <p>Monday 18 February (5 - 7pm) - New Moston Library, Nuthurst Road, Moston M40 3PJ (Meeting Room)</p>
----------------------------------	--

	<p>Wednesday 20 February (5 – 7pm) – New Moston Library, Nuthurst Road, Moston M40 3PJ (Meeting Room)</p> <p>Thursday 21 February (5.30 – 7.30pm) - Miles Platting Library, Varley Street, Miles Platting M40 8EE (Library Foyer)</p> <p>Saturday 23 February (2 – 4pm) - Withington Leisure Centre, 28-30 Burton Road M20 1HA</p> <p>Tuesday 26 February (5 – 7pm) - Chorlton Library, Manchester Road, Chorlton M21 9PN (Meeting Room)</p> <p>Thursday 28 February (5 – 7pm) – Withington Leisure Centre, 28-30 Burton Road M20 1HA</p> <p>Tuesday 5 March (5 – 7pm) – Chorlton Library, Manchester Road, Chorlton M21 9PN (Meeting Room)</p> <p>Thursday 7 March (5:30 – 7:30pm) – Miles Platting Library, Varley Street, Miles Platting M40 8EE (Library Foyer)</p> <p>All consultation related enquiries, complaints and comments received by Executive Members and across Council departments were logged, acknowledged and dealt with centrally on a case by case basis. All comments formed part of the consultation process.</p> <p>There were a total of 987 responses to the Indoor Leisure consultation. Of these, 482 responses were received after the amendment to the Indoor Leisure proposals.</p> <p>Generic Impact</p> <p>It was identified through the consultation process that there were some generic impacts upon users and programmes which have been identified as follows;</p> <ul style="list-style-type: none">○ Possible drop off in users for individual programmes.○ Increased travel, time to travel and additional cost to travel to access what was previously a local offer.○ Loss of familiar surroundings (privacy, pool temperature etc) and staff understanding in
--	---

- support of programmes.
- o Decrease in participation in healthy activity in the local area.
- o Possible impact on timing of existing programmes within any neighbouring facility.

Work has been ongoing in identifying alternative provision and programmes, however it is anticipated that there could still be a negative impact on users who may not continue to participate at alternative sites.

Gender

The largest proportion of respondents to the consultation were female. This may reflect higher levels of female leisure service usage which could be a consequence of current targeted programmes.

The table below shows the proportion of female respondents compared to the resident population.

	Questionnaire number of	Questionnaire percentage of	Manchester resident population
Male	347	35%	50.2%
Female	569	58%	49.8%
No response	71	7%	n/a
Total	987	100%	100%

Age

The majority of respondents (23%) were aged between 35 and 44 years. The table below demonstrates that respondents aged 24 and under are underrepresented compared to the resident population. Whilst respondents aged 35-64 are overrepresented compared to the resident population. This again may reflect targeted programmes at current leisure facilities and the provision on free 60+ swimming provision across Manchester pools.

	responses	responses	population (2011 Census)
Under 18	14	1%	21.5%
18-24	48	5%	17.7%
25-34	218	22%	20.2%
35-44	228	23%	13.2%
45-54	159	16%	10.4%
55-64	124	13%	7.5%
65+	102	10%	9.4%
Prefer not to say	21	2%	n/a
No response	73	7%	n/a
Total	987	100%	100%

Ethnicity

Over two thirds of respondents (70%) stated their ethnicity as White British, a higher proportion than reflected in the resident population. . 15% of respondents preferred not to say or did not respond to the question.

	Questionnaire number of responses	Questionnaire percentage of responses	Manchester resident population (2011 Census)
Bangladeshi	3	0.3%	1.3%
Black African	5	0.5%	5.1%
Black British	11	1.1%	n/a
Black Caribbean	1	0.1%	1.9%
Chinese	5	0.5%	2.7%
Indian	13	1.3%	2.3%
Irish	28	2.8%	2.4%
Middle Eastern	1	0.1%	n/a

Other Asian	3	0.3%	2.3%
Other ethnic group	12	1.2%	1.2%
Other mixed origin	1	0.1%	1.0%
Other white	37	3.7%	4.9%
Pakistani	16	1.6%	8.5%
Roma/Romani traveller	1	0.1%	n/a
White and Asian	4	0.4%	1.0%
White and Black African	6	0.6%	0.9%
White and Black Caribbean	4	0.4%	1.8%
White British	693	70.2%	59.3%
Prefer not to say	58	5.9%	n/a
No response	85	8.6%	n/a
Total	987	100.0%	100%

Faith and Religion

The majority of respondents (37%) described their faith or religion as Christian. Just over a third of all respondents (34%) did not consider themselves to have a faith or religion. A large proportion (21%) did not want to state their religion or did not respond to the question. .

	Questionnaire number of responses	Questionnaire percentage of responses	Manchester resident population (2011 Census)
Buddhist	9	0.9%	0.8%
Christian	365	37.0%	48.7%
Hindu	9	0.9%	1.1%
Jewish	9	0.9%	0.5%
Muslim	31	3.1%	15.8%

Sikh	1	0.1%	0.5%
Other	19	1.9%	0.4%
I do not consider myself to have a faith or religion	334	33.8%	25.3%
Prefer not to say	108	10.9%	6.9%
No response	102	10.3%	n/a
Total	987	100%	100%

Disability

The table below demonstrates that over two thirds of respondents (77%) stated that they did not consider themselves disabled. 14% of respondents either preferred not to say or did not respond to the question.

	Number of responses	Percentage of responses
Yes	87	9%
No	760	77%
Prefer not to say	44	4%
No response	96	10%
Total	987	100%

Sexuality

The table below demonstrates that the majority of respondents (65%) described their sexuality as heterosexual. 26% of respondents either preferred not to say or did not respond to the question.

	Number of responses	Percentage of responses
Bisexual	23	2%
Gay	37	4%
Heterosexual (straight)	637	65%

Lesbian	27	3%
Other	8	1%
Prefer not to say	136	14%
No response	119	12%
Total	987	100%

Gender at Birth

Respondents were asked whether they identified with the gender they were assigned at birth. The table below demonstrates that the majority of respondents (82%) responded yes to this question.

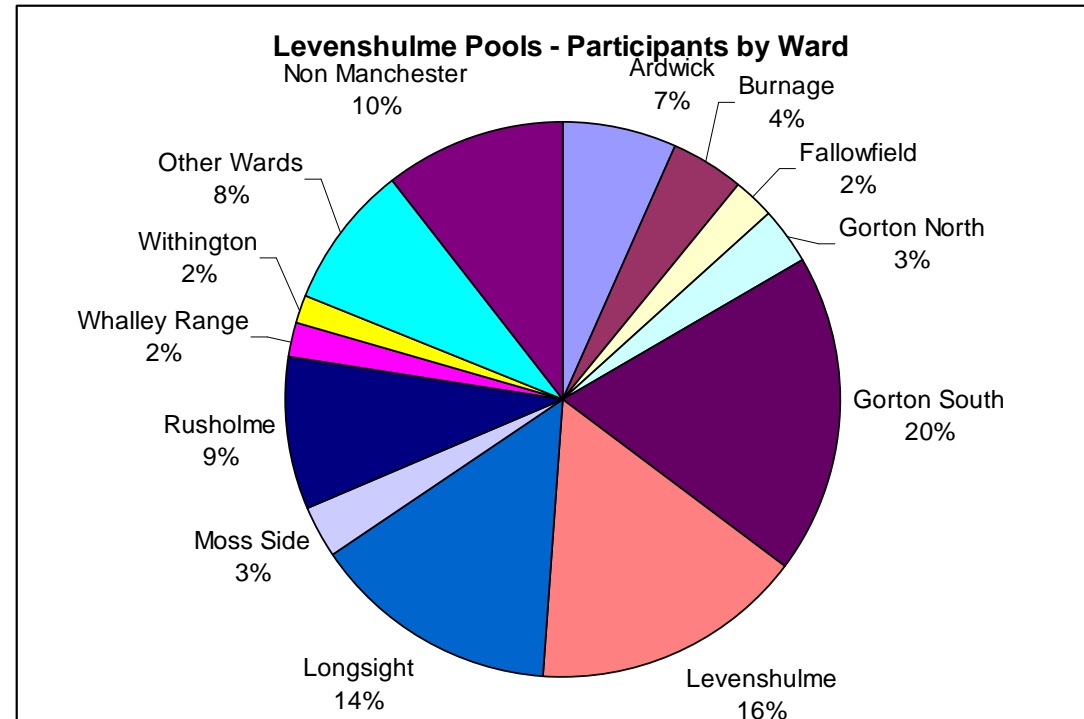
	Number of responses	Percentage of responses
Yes	805	82%
No	8	1%
Prefer not to say	39	4%
No response	135	14%
Total	987	100%

Current user groups were asked to give their views in 1-1 telephone interviews or at individual face to face meetings with officers. Representatives of the male nudist swim group, Malin (Transgender group), City Care (Special Needs Group – learning disabled), Active Lifestyles (Asian Women, Aquanatal, Women's Sessions etc) Northfield Day Centre user group and Manchester Sharks (LGBT water polo group) contributed to the process in this way. Discussions covered what site specific facilities were essential or desirable for their particular groups now, whether sessions were transferable to other venues given the specific needs of their groups and sessions and design and usage issues which they would want to highlight for facility design going forward.

Levenshulme

It is envisaged that service users from Levenshulme will temporarily be facilitated to utilise the Manchester Aquatics Centre and Wright Robinson until the new centre is developed.

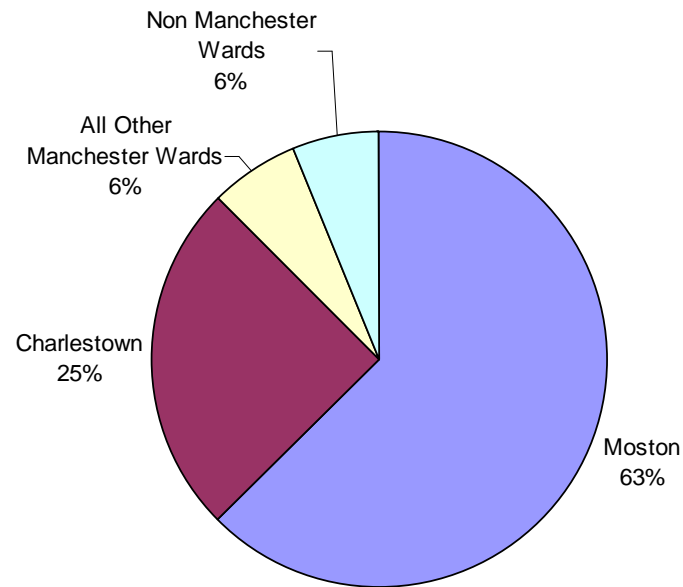
Participants on the Active Lifestyles programme at Levenshulme Pools mainly reside in Gorton South and surrounding wards, as is to be expected, but some do come from further away, as shown in the following chart.



A number of groups provided 1-1 feedback re the feasibility of transfer of sessions to these facilities. Active Lifestyles provide a very successful 21 sessions of activity a week at Levenshulme pools covering 9 different activities; aqua discovery, aqua natal, Aquacise, Funquatics, learn to swim, learn and improve, improvers, mother and child and mother and daughter. 14 of these sessions cater exclusively for women. The sessions are particularly popular with Asian and Muslim women who value the privacy that Levenshulme pool, changing and toilet facilities provided.

	<p>Active lifestyle participation stats at Levenshulme for the period 1st February 2012 to 31st January 2013 are 1036 females, 192 males = total 1228 people, of which 788 were from BME (non-white) ethnic groups.</p> <p>The Transgender Group attend on a monthly basis and numbers do slightly vary from month to month, however it is estimated that up to 240 users would access the offer on an annual basis, based on 20 users per month.</p> <p>Over 60's swim year total 3,780 attendances and 669 at over 50's gym sessions</p> <p>Broadway</p> <p>It is envisaged that service users from Broadway will be facilitated to utilise North City Family and Fitness Centre and the new facilities at Chadderton Wellbeing Centre.</p> <p>Participants on the Active Lifestyles programme at Broadway Pools mainly reside in Moston and surrounding wards, as shown in the chart below.</p>
--	---

Active Lifestyles Aquatics at Broadway - Participation by Ward

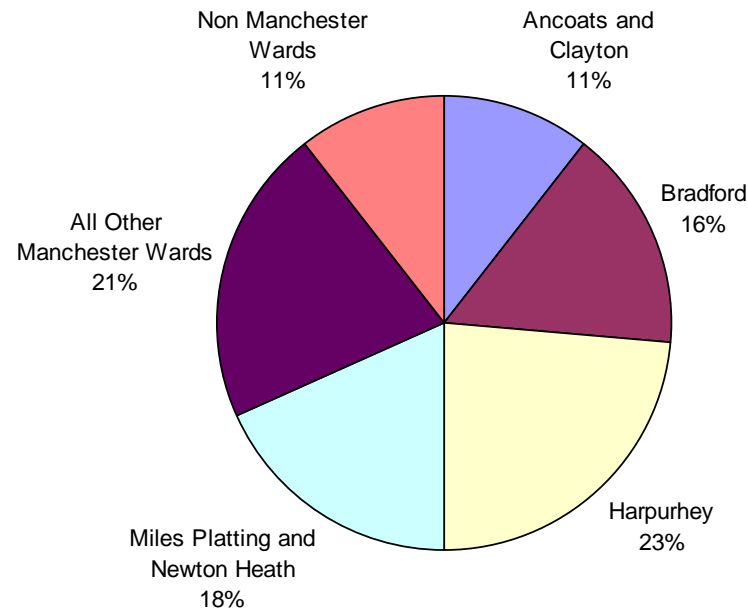


Active lifestyle participation stats at Broadway for the period 1st February 2012 to 31st January 2013 are 26 females, 3 males = total 29 people, of which 4 were from BME (non-white) ethnic groups.

Northfields Day Centre, which works with adults with learning difficulties, currently uses pool facilities for 1 hour on a Friday for up to 30 service users. They provided 1-1 feedback as part of the consultation. The impact of loss of service would be reduced social contact for an isolated group. Transfer of provision to alternative provision at North City Family and Fitness Centre which is about 2 miles further away would lead to a reduction in participation. Most participants walk to Broadway as part of the activity session and this would not be feasible if a greater distance was involved. Ring and Ride can only provide one bus which would severely limit numbers able to attend the session. Use of the bus would also impact on the numbers able to participate. Northfields do currently use North City but numbers at these sessions are currently 10/12. A number of users only participate on a Friday as they also particularly value the privacy afforded to them at Broadway.

	<p>Miles Platting</p> <p>Investment in a new Beswick Community Hub will enable the closure of Miles Platting Pools. The new facility will open in Autumn 2014. It is proposed that Miles Platting Pools are closed following consultation with service users, which would avoid running costs of £450k (over 2 years) and ongoing maintenance costs estimated to be in the region of £50k.</p> <p>Temporarily, service users from Miles Platting will be facilitated to use North City Family and Fitness Centre, Wright Robinson Sports College, and the Manchester Aquatic Centre until the new Beswick facility is open.</p> <p>Participants on the Active Lifestyles programme at Miles Platting mainly reside in Harpurhey and surrounding wards, as shown in the chart below.</p>
--	--

Active Lifestyles Aquatics at Miles Platting - Participation by Ward



Active lifestyle participation stats at Miles Platting for the period 1st February 2012 to 31st January 2013 are:

38 females, 0 males = total 38 people, of which 4 were from BME (non-white) ethnic groups


Manchester Sharks water polo club provided 1-1 feedback on the proposals. This group, whose membership is currently 30, provide opportunities for gay men and women to play water polo. They are in favour of the new facility at Beswick which will enable them to promote the group / club and facilitate probable growth. However a temporary loss of local facilities with a 2m tank and use of irregular and more expensive sessions at MAC, would have a negative impact on them as a group, their training schedule, the quality of training and therefore their ability to compete equally. In particular to the women's team which is in the early stages of development felt that they would loose members pending new facilities being available.

3. Delivery of a customer focused function

Does your analysis indicate a disproportionate impact relating to race ?	Y	N	
<p>Please describe the nature of any disproportionate impact/s</p> <p>Please indicate what actions will be taken to address these</p>	X		<p>Ethnicity/religion has been found to be a factor in uptake by Asian groups in leisure provision generally but more particularly for swimming. There are currently Islam/Asian/ Women's Swim sessions available across indoor leisure sites.</p> <p>Provision of private facilities have been highlighted as the most important issue in facilitating successful women only swimming sessions alongside understanding and well trained staff. Provision of separate pools and single sex changing provision adjacent to the pool was cited as an essential feature to facilitate this. At Levenshulme where the majority of this service is delivered, transfer to other facilities was seen as problematic as MAC has a viewing gallery which overlooks the pool and has changing facilities which do not allow absolute privacy and a discrete route to the pool. Wright Robinson has blinds which can be drawn to ensure privacy but an extensive school programme and busy evening schedule mean that exclusive use would be unlikely. Roping off part of a pool would not be suitable for these client groups. Travel costs to these venues were also seen as prohibitive. Additionally Active Lifestyle membership at Levenshulme allows access to an extensive women only swimming programme, 14 sessions a week. This can be accessed for a £50 annual membership or for £5 per month. Such an extensive programme could not be transferred in full to other facilities. New facilities once built will be designed to offer maximum accessibility and will ensure that, as a minimum, current levels of accessibility and engagement are maintained but with an aim to continuously develop participation by equality groups.</p> <p>We will ensure that replacement facilities will facilitate use by all equality groups via the design briefs. Provision of single sex only and faith based swimming session will be retained at the new facilities. We will continue to develop staff awareness in developing and delivering diverse programmes accommodating wider community needs.</p> <p>If there is a gap in provision, transferring to other facilities will not fully mitigate any disproportionate impact on race.</p> <p>We will continue to undertake targeted work with BME communities and existing users via the Active Lifestyles programme to identify any barriers to uptake that are a consequence of ethnicity. A further</p>

	EIA will be carried out in respect of the new facilities as the design progress is made, in line with identified local priorities.		
Which action plans have these actions been transferred to?	<ul style="list-style-type: none"> • Equalities Delivery Plan • Equality Framework For Local Government • Business Plan 		
Does your analysis indicate a disproportionate impact relating to disability ?	Y	N	
	x		
<p>Please describe the nature of any disproportionate impact/s</p> <p>Please indicate what actions will be taken to address these</p>	<p>Our aim is to ensure that all disabled customers and staff are able to access services and facilities. As a minimum, current facility levels will be maintained at the new facilities to ensure that the needs of equality groups are protected but, wherever possible, a more accessible infrastructure and programme will be developed to encourage an even wider customer base.</p> <p>Consideration will also be taken on the pool temperature for specific programmes. In 1-1 discussion's as part of the consultation one of the issues, re; transfer of provision for disabled users to MAC was the lower water temperature maintained there for squad swimming. This is also uncomfortable for careers working in the water during sessions who aren't able to move about in the same way as participants. Ambient temperature as well as water temperature has an impact for those standing in the water for extended periods.</p> <p>The new indoor leisure facilities will be designed within the guidance set out in Design for Access 2 (DFA2) and will reflect current best practice. The standards are based upon the "Social Model of Disability" and as a result, in some areas, improve upon the current government guidance and regulations such as the disabled people's provisions within the Equality Act 2010.</p> <p>Children's Able and Disabled Sport (CADS) camps are fully inclusive sporting events where young people regardless of ability, can take part in many different sport, health and leisure activities. The ethos is that sport can be played by anyone and should be enjoyed by all. CADS aim to help young people realise their full sporting potential. All camps are fully integrated where disabled and non-disabled children participate side by side regardless of ability. CADS activities will be delivered as a component part of a wider programme across all existing and new leisure facilities and should be enhanced by improved access and equipment.</p> <p>Learning disabled customers using Levenshulme also commented on the benefits of changing and</p>		

	<p>toilet facilities adjacent to the pool which enables a safe contained environment. The separate pool facility allows simultaneous programming and the private environment accommodates noisy play, boisterous games and behaviours which would be less acceptable in a shared pool environment. Sectioning off part of a pool would not work for these client groups.</p> <p>We will ensure that replacement facilities provide adequate access throughout the building to facilitate use by disabled service users via the design briefs. We will continue to develop staff awareness in developing and delivering diverse programmes accommodating wider community needs.</p> <p>Community and Cultural Services has a dedicated Disability Sports Manager in post who co-ordinates the Disability Sports Programme (CADS), this will continue and be further developed within all new facilities.</p> <p>We will continue to undertake targeted consultation via partners and existing user groups to identify any barriers to uptake that are a consequence of disability. We will continue to develop staff awareness in developing and delivering diverse programmes, accommodating wider community needs.</p> <p>DFA2 will ensure inclusive design, wherever possible, in the development of new facilities. This will provide better building access, including pedestrian crossing, disabled parking facilities and accessible, private shower facilities. Additionally, features such as movable pool floor and hoists will enable a wider programme of activities for disabled people.</p> <p>A further EIA will be carried out in respect of individual facilities as each business case develops and details of the schemes emerge.</p>		
Which action plans have these actions been transferred to?	<ul style="list-style-type: none"> • Equalities Delivery Plan • Equality Framework For Local Government • Business Plan 		
Does your analysis indicate a disproportionate impact relating to Gender (including gender reassignment or pregnancy and maternity)?	Y	N	
	X		

<p>Please describe the nature of any disproportionate impact/s</p> <p>Please indicate what actions will be taken to address these</p>	<p>Our aim is to ensure that all customers and staff are able to access services and facilities available at the new pool premises, and that no one experiences discrimination on the basis of their gender. As a minimum, current facility levels will be maintained at new facilities to ensure that gender related needs are protected but, wherever possible, a more accessible infrastructure will be developed to encourage an even wider customer base.</p> <p>Active Lifestyles currently offers schemes for women & young girls only at Levenshulme. There have been 21,724 visits on the Active Lifestyles programmes at Levenshulme Pool since the services was officially launched in January 2011, up until mid march 2013 These visits were made by 2082 people, of which the majority (1763) were women/girls</p> <p>A female lifeguard service is offered for these sessions. A qualified woman swimming teacher is also in attendance which enables flexible delivery of swimming lessons. The less rigid learning schedule can better accommodate cultural issues and encourages teenage girls in particular to participate. Research from May 2012 by Women's Sport and Fitness Foundation found that girls start doing less activity than boys as soon as they are eight or nine years old. By the time they are 14 only 12% of girls are active enough. "Some said they did not like exercising in front of boys and they were not confident about their sporting skills" Arrangements which afford privacy to accommodate faith or disability related needs also enables other groups to exercise comfortably particularly teenage girls. We will ensure that replacement facilities and programmes provide adequate privacy within the pool area to facilitate use by all equality groups. Provision of women only and "club" swimming session will be retained at the new facilities. Consideration will be given to the differing changing facility needs of all equality groups throughout the design process for all sites based on the feedback received from the consultation. We will continue to develop staff awareness in developing and delivering diverse programmes accommodating wider community needs.</p> <p>We will maintain, as a minimum, current levels of single sex, gender aware etc. swimming and gym provision.</p> <p>We will continue to undertake focused consultation via partners and existing user groups to identify any barriers to uptake that are a consequence of gender.</p> <p>A further EIA will be carried out in respect of individual facilities as the business case develops and detail of each scheme emerges.</p>
<p>Which action plans have these actions been transferred to?</p>	<ul style="list-style-type: none"> • Equalities Delivery Plan • Equality Framework For Local Government • Business Plan
<p>Does your analysis indicate a</p>	<p>Y N </p>

disproportionate impact relating to age ?	X																						
<p>Please describe the nature of any disproportionate impact/s</p> <p>Please indicate what actions will be taken to address these</p>	<p>Our aim is to ensure that all customers and staff whatever their age are able to access services and facilities available at the new pool and library premises, and that no age group is discriminated against or disadvantaged in any way. As a minimum, current facility levels will be maintained to ensure that the needs of equality groups are protected but, wherever possible, a more accessible infrastructure will be developed to encourage an even wider customer base.</p> <p>Levenshulme, Broadway and Miles Platting currently offer a programme of opportunities to encourage participation by a wide age range of customers. These include:</p> <ul style="list-style-type: none"> • Over 50's general swim • Over 50's gym • Adult only swimming • School swimming (LEA) • After school clubs • Parent and toddler swim <p>Facilities also offer over 60's and under 16's (in school holidays) free swimming. Participation for the last full 12 month period available is reported below:</p> <table border="1"> <thead> <tr> <th>Under 16</th><th></th><th>Over 60s</th><th></th></tr> <tr> <th>April 12 – Dec 13</th><th></th><th>April 12 – Dec 13</th><th></th></tr> </thead> <tbody> <tr> <td>Broadway</td><td>1,483</td><td>Broadway</td><td>2,532</td></tr> <tr> <td>Levenshulme</td><td>2,862</td><td>Levenshulme</td><td>4,005</td></tr> <tr> <td>Miles Platting</td><td>1,705</td><td>Miles Platting</td><td>2,473</td></tr> </tbody> </table> <p>One of the transfer options for customers currently using Broadway facilities is Chadderton Well being Centre. This pool is in Oldham and doesn't provide the same free swim offer as Manchester. Negotiations are ongoing with the Chadderton service provider to ensure that eligible customers can transfer to this facility without incurring costs for their swim. It is anticipated that the outcome of this negotiation will be positive which will mitigate against disproportionate impact for under 16's and over 50's who could be affected by this change</p> <p>Active Lifestyles promote physical activity for all ages (from 0 -100), within the sedentary population</p>			Under 16		Over 60s		April 12 – Dec 13		April 12 – Dec 13		Broadway	1,483	Broadway	2,532	Levenshulme	2,862	Levenshulme	4,005	Miles Platting	1,705	Miles Platting	2,473
Under 16		Over 60s																					
April 12 – Dec 13		April 12 – Dec 13																					
Broadway	1,483	Broadway	2,532																				
Levenshulme	2,862	Levenshulme	4,005																				
Miles Platting	1,705	Miles Platting	2,473																				

	<p>and those groups that are the least active / hardest to reach / at highest risk. Active Lifestyles programmes will focus on 0-5's, Children and young, older people and inactive adults amongst others.</p> <p>Transfer to other facilities will be enabled wherever possible however, use of Manchester Aquatics Centre may be problematic due to lower pool temperature in some pools but not all to facilitate squad swimming. This may not be suitable for younger and older swimmers who lose heat more readily and are not always able to swim vigorously. Also for those swimmers requiring carers to be with them, standing in water, ambient temperature also needs to be comfortable.</p> <p>We will maintain, as a minimum, current levels of adult only, parent and tot etc. swimming and gym provision.</p> <p>Community hub provision should offer more scope for quality multi use space which could be used by community groups including pensioners groups, youth offer provision etc.</p> <p>We will continue to undertake focused consultation via partners and existing user groups to identify any barriers to uptake that are a consequence of age.</p> <p>A further EIA will be carried out in respect of individual facilities as the business case develops and details of the scheme emerge.</p>		
Which action plans have these actions been transferred to?	<ul style="list-style-type: none"> • Equalities Delivery Plan • Equality Framework For Local Government • Business Plan 		
Does your analysis indicate a disproportionate impact relating to sexual orientation ?	Y	N	
		X	
<p>Please describe the nature of any disproportionate impact/s</p> <p>Please indicate what actions will be taken to address these</p>	<p>There is no reason to believe that the proposed changes to indoor leisure facilities would have any greater or lesser impact on people on account of their sexuality.</p> <p>987 respondents completed the Sexuality option within the consultation questionnaire, of which, 637 (65%) said they were heterosexual, 23 bisexual (2%), 37 gay (4%) and 27 lesbian (3%). 26% of respondents preferred not to say or didn't respond to this question. Data on sexuality of current Leisure Service users is not collected so no impact can be established at this time.</p> <p>In Levenshulme several of the comments made by LGBT respondents related to their preference to keep existing facilities, particularly because they are well used by a variety of community groups, including the LGBT/naturist swimming group. Some respondents commented on the importance of the service being discrete.</p>		

	<p>Manchester Sharks water polo club commented that if access to a 2m tank was not available to them they would be disadvantaged in their ability to train as effectively, however, they are extremely positive about the development of a new facility in Beswick which they recognise will better meet their longer term needs. It is likely that alternative and comparable facilities will be secured for them in the interim period before the new pool is completed in Beswick.</p> <p>Our aim is to ensure that all customers and staff are able to access services and facilities available at the new pool and library premises, and that no equality group is discriminated against or disadvantaged in any way. As a minimum, current facility levels will be maintained to ensure that the needs of equality groups are protected but, wherever possible, a more accessible infrastructure will be developed to encourage an even wider customer base.</p> <p>Specific impacts are not yet known across all sites as locations, designs and specifications have not yet been sufficiently developed. We anticipate, and are working towards a zero impact on all services and programmes currently delivered within all the buildings and believe that a new modern facility will deliver better access and functionality for all users allowing scope for development.</p> <p>We will aim to ensure that replacement facilities provide adequate privacy within the pool and changing areas to facilitate use by all existing and any future equality groups. We will continue to develop staff awareness in developing and delivering diverse programmes accommodating wider community needs.</p> <p>We will continue to undertake focused consultation via partners and existing user groups to identify any barriers to uptake that are a consequence of sexual orientation and undertake proactive and targeted marketing. We aim to ensure that further data gathering and monitoring exercises with adult participants include the opportunity to capture sexuality data as well as other key demographic data. A further EIA will be carried out in respect of individual facilities as the business case develops and details of the scheme emerge.</p>		
Which action plans have these actions been transferred to?	<ul style="list-style-type: none">• Equalities Delivery Plan• Equality Framework For Local Government• Business Plan		
Does your analysis indicate a disproportionate impact relating to religion and belief (including lack of religion or belief)?	Y	N	
	X		

<p>Please describe the nature of any disproportionate impact/s</p> <p>Please indicate what actions will be taken to address these</p>	<p>The Islamic /Jewish and Asian Women’s Swim Programme demonstrates positive impact relating to equality in religion and belief within indoor leisure provision.</p> <p>Discussion during the consultation period highlighted that swimming lessons provision delivered by the Active Lifestyle programme provided the flexibility needed to enable Muslim women and girls to undertake swimming lessons taking into account their religious practice. This is not achieved through mainstream swimming lessons. Active lifestyle programmes were also able to guarantee women lifeguards and at Levenshulme, private facilities away from male staff and visitors.</p> <p>Crucial to the success of these swimming programmes is the guarantee of a male free swimming and changing environment. It was commented that this was best served by having separate pool facilities with changing adjacent which negate the need for travel across area which may be viewed by others outside the group.</p> <p>We will maintain, as a minimum, current levels of swimming and gym provision including faith based swimming sessions following the move to new facilities. We will continue to develop staff awareness in delivering diverse programmes accommodating wider community needs.</p> <p>Transfer of provision, if there is a gap in service before new facilities are completed we will, wherever possible, provide the privacy needed to accommodate cultural and religious practice.</p> <p>We will continue to undertake focused consultation via partners and existing user groups to identify any barriers to uptake that are a consequence of religion or belief.</p> <p>Active Lifestyle staffing will be retained throughout the transition to new facilities to enable continuation of faith group and women only swimming lessons and sessions.</p>		
<p>Which action plans have these actions been transferred to?</p>	<ul style="list-style-type: none">• Equalities Delivery Plan• Equality Framework For Local Government• Business Plan		
<p>Does your analysis indicate the potential to <i>cause discrimination</i> in relation to marriage and civil partnership?</p>	<p>Y</p>	<p>N</p>	
		<p>X</p>	

<p>Please describe the nature of any disproportionate impact/s</p> <p>Please indicate what actions will be taken to address these</p>	<p>There is no reason to believe that the proposed changes to indoor leisure facilities would have any greater or lesser impact on people in relation to marriage and civil partnership. Leisure Services provide a universal service, open to the entire community. They play host to a wide range of different events, activities and groups. Manchester Leisure Service actively promotes equal access and equal opportunities and undertakes specific activity so that all residents are able to benefit from leisure services.</p>						
<p>Which action plans have these actions been transferred to?</p>							
<p>Does your analysis indicate a disproportionate impact relating to carers?</p>	<table border="1"> <tr> <td>Y</td> <td>N</td> </tr> <tr> <td>X</td> <td></td> </tr> </table>	Y	N	X			
Y	N						
X							
<p>Please describe the nature of any disproportionate impact/s</p> <p>Please indicate what actions will be taken to address these</p>	<p>1-1 discussion as part of the consultation raised the issue of the need to take into account carers needs particularly with regard to pool and ambient pool building temperature. Pool temperature has been commented on in previous consultations by older swimmers and in relation to parent and baby swimming. In 1-1 discussion as part of the consultation one of the issues re transfer of provision for disabled users to MAC was the lower water temperature (in some pools) maintained there for squad swimming. This is may also be uncomfortable for careers working in the water during sessions who aren't able to move about in the same way as participants. Ambient temperature as well as water temperature has an impact for those standing in the water for extended periods. It was also commented that more baby change tables and areas to put babies down safely while carers change were needed.</p>						
<p>Which action plans have these actions been transferred to?</p>	<ul style="list-style-type: none"> • Equalities Delivery Plan • Equality Framework For Local Government • Business Plan 						

4. EIA Action Plan

Service / Directorate lead:

Strategic Director:

Business Improvement and Partnerships – Equality Team lead:

Actions identified from EIA	Target completion date	Responsible Officer	Is this action identified in your Directorate Business Plan and / or Equality Action Plan? (Yes / No / n/a)	Comments
Identify specific and equivalent transfer options for groups displaced from facilities which are closing	May 2013	David Boothroyd	n/a	Specific needs identified in EIA include Manchester Sharks water polo, women only and faith provision at Levenshulme, City Care
Continue to develop staff awareness of equality groups needs building on the learning and development and positive feedback from the consultation	March 2013	Via the Manchester Sport and Leisure Trust (MSLT) and Wythenshawe Forum Trust (WFT) with MCC lead officer support.	Yes	Staff skills may present barriers to all groups through lack of awareness of needs and requirements of groups/knowledge of existing help and support available.
Ongoing consultation via community, Active Lifestyles and users/ non user forums and representatives of equality and interest groups in Manchester.	March 2013	Via the Manchester Sport and Leisure Trust (MSLT) and Wythenshawe Forum Trust (WFT) with MCC lead officer support.	Yes	Ensure participation by non user groups as well as current users
Ensure improved physical access to	March 2013	Neil Fairlamb	n/a	Use EIA to highlight issues

Actions identified from EIA	Target completion date	Responsible Officer	Is this action identified in your Directorate Business Plan and / or Equality Action Plan? (Yes / No / n/a)	Comments
new buildings and design facilities and services to meet everyone's needs by working with architects, planners, DFA2 partners, members, and users etc.				which need to be highlighted within this process.
Improve communication and marketing to all equality groups.	Continuous, through existing marketing programmes	Via the Manchester Sport and Leisure Trust (MSLT) and Wythenshawe Forum Trust (WFT) with MCC lead officer support. David Boothroyd	Yes	Publicise facilities likely to attract increased usage by equality groups
Ensuring that contracts for delivery of leisure services reflect the needs for support and services across all equality groups and the need for effective monitoring and evaluation.	This action will fall in line with the timeline for a new contract in 2014?	Neil Fairlamb	n/a	Contract specification to reflect the need for provision to all equality groups as highlighted in the EIA
Highlight issues from the EIA across all new facility programme development and design processes to ensure that equality group concern are taken into account at all stages.	Ongoing throughout the design process. March 2013.		n/a	

5. Director level sign off

Name:		Date:	
Directorate:		Signature:	

NB: Sign-off must be in the form of an actual signature; not an emailed authorisation

**Manchester City Council
Report for Resolution**

Report to: Neighbourhoods Scrutiny Committee – 3 April 2013
Executive – 10 April 2013

Subject: Leisure Budget Proposals Consultation Response – Additional information on public petitions

Report of: Vicky Rosin, Deputy Chief Executive (Neighbourhoods)

Petitions Received	Name of Petition Organiser	Number of Valid Signatures	Number of Invalid Signatures	Total Number of signatures
Subject of Petition				
Save Levensulme Swimming Baths	Inspire centre	114	575	689
Closure of Levenshulme Baths	None	0	41 decorated paper plates	41
Combined Levenshulme Baths		114	616	730
Keep Levenshulme Baths and Library open	Cllr James Hennigan	723	1045	1768
Keep Levenshulme Baths & Library Open	Cllr James Hennigan	135	96	231
Save Levenshulme Swimming Pool and our Services	Inspire centre	297	511	808
Combined Levenshulme Baths and Library		1155	1652	2807
Save Withington Baths	Cllrs: Wheale, DiMauro, Lewis, Clayton, Taylor John Leech MP	0	542 + 296 added on 20/2/13 + 46 added 21/2/13	884
Save Withington Leisure Centre	None	0	11	11
Save Withington Baths	Ms Astley	4273	4476	8749
Save Withington Leisure Centre (online)	None	1416	0	1416
Combined Withington Baths		5689	5371	11060

Petitions Received	Name of Petition Organiser	Number of Valid Signatures	Number of Invalid Signatures	Total Number of signatures
Subject of Petition				
Keep Swimming Facilities in Chorlton District Centre	Cllr Victor Chamberalian	15	57	72
Keep Swimming Facilities in Chorlton District Centre	Cllr Victor Chamberalian	0	26	26
Keep Swimming Facilities in Chorlton District Centre	Cllr Victor Chamberalian	1	0	1
Save Chorlton Baths	Cllr Victor Chamberalian	3	0	3
Combined Chorlton		19	83	102
Save Mersey Valley Countryside Warden Service	Cllr Victor Chamberalian	0	50	50
Save Mersey Valley Countryside Warden Service	Cllr Victor Chamberalian	194	244	438
Save Mersey Valley Countryside Warden Service		0	377	377
Save Mersey Valley Countryside Warden	John Leech	661	242	903
Save Mersey Valley Countryside Warden Service	Cllr Victor Chamberalian	6	0	6
Save Mersey Valley Wardens		116	172	288
Combined Mersey Valley		977	1085	2062
Save Miles Platting Pools	Theresa Preston	0	654	654
Stop the closure of New Moston Library and Broadway Leisure Centre (online)	Emma Cropper	743	0	743
Save our New Moston swimming pool and leisure centre	Jean Collins	1	0	1